

## PASIVOS DAS



## Attenuator 200W (698-3800)

Model: PVL106.400638

### Product Features:

- Low VSWR
- Low PIM
- High reliability

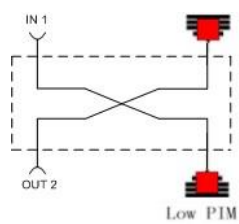


### Technical Specifications:

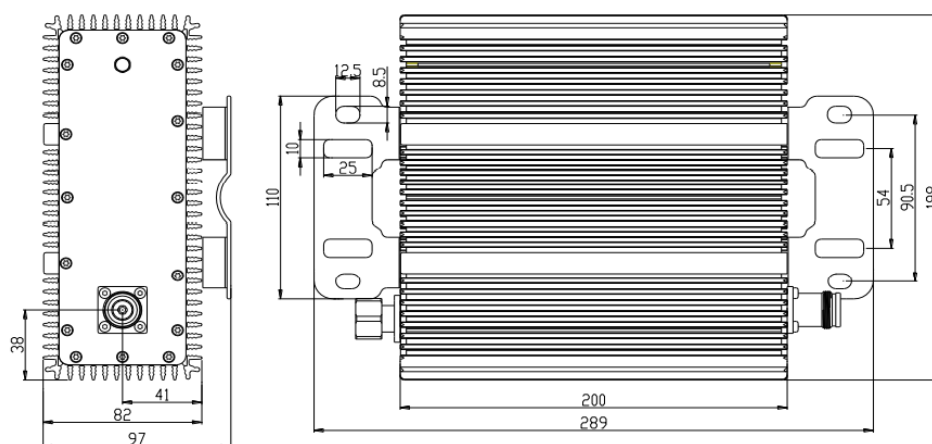
Electrical										
Attenuation	3	5	7	10	15	20	25	30	35	40
Attenuation accuracy	±0.6			±0.8				±1.0		
Frequency (MHz)	698-3800									
VSWR	≤1.25									
PIM, 3rd Order (dBc)	≤ -160 (2 x 43 dBm carrier)									
Average power, maximum (W)	200									
Impedance (Ω)	50									
Grounding	DC Ground									

Mechanical	
Operating temperature	-20°C to +60°C
Storage temperature	-35°C to +75°C
Relative humidity	5% - 95%
Classification of waterproof	IP67
Dimensions (H x W x D) (mm)	200x198x82mm
Net weight (with installation kit) (kg)	≤4.5
Connector	N-Female/Din-Female/4.3-10 Female

## Schematic Diagram



## Outline Drawing:

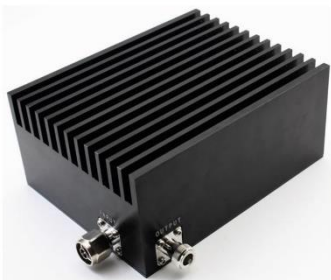


# Attenuator 100W (698-2700)

Model: PVL106.400627

## Product Features:

- Low VSWR
- Low PIM
- High reliability

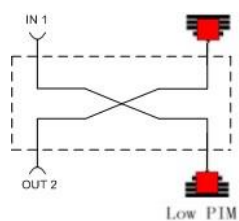


## Technical Specifications:

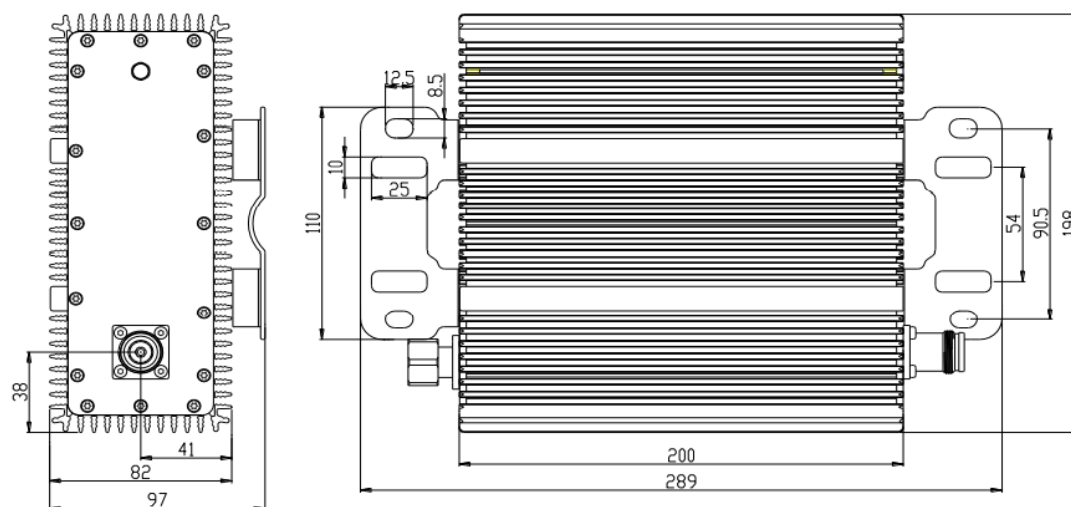
Electrical										
Attenuation	3	5	7	10	15	20	25	30	35	40
Attenuation accuracy	±0.6			±0.8			±1.0			
Frequency (MHz)	698-2700									
VSWR	≤1.25									
PIM, 3rd Order (dBc)	≤ -160 (2 x 43 dBm carrier)									
Average power, maximum (W)	80									
Impedance (Ω)	50									
Grounding	DC Ground									

Mechanical	
Operating temperature	-20°C to +60°C
Storage temperature	-35°C to +75°C
Relative humidity	5% - 95%
Classification of waterproof	IP67
Dimensions (H x W x D) (mm)	140x160x82mm
Net weight (with installation kit) (kg)	≤2.5
Connector	N-Female/Din-Female/4.3-10 Female

## Schematic Diagram



## Outline Drawing:



## Termination Load 200W (DC-4000)

Model: PVL105.02000040

### Product Features:

- Wide frequency range
- Low VSWR
- Low PIM
- High reliability

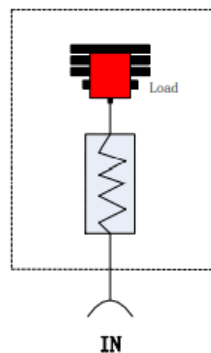


### Technical Specifications:

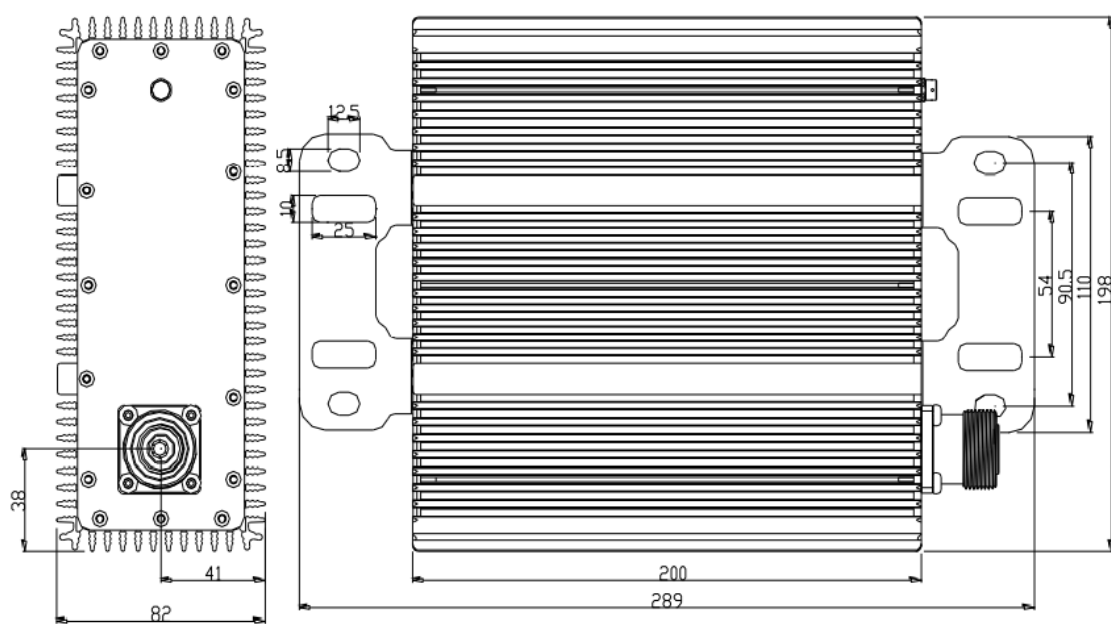
Electrical	
Frequency (MHz)	DC-4000
Return loss/VSWR	$\leq -20\text{dB}/1.22$
PIM, 3rd Order (dBc)	$\leq -160$ (2 x 43 dBm carrier)
Average power, maximum (W)	200
Impedance ( $\Omega$ )	50

Mechanical	
Operating temperature	-55°C to +65°C
Storage temperature	-40°C to +85°C
Relative humidity	5% - 95%
Classification of waterproof	IP67
Dimensions (H x W x D) (mm)	200x198x82mm
Net weight (with installation kit) (kg)	$\leq 2.0$
Connector	N-Female/Din-Female/4.3-10 Female

### Schematic Diagram



## Outline Drawing:



## Termination Load 100W (DC-4000)

Model: PVL105.01000040

### Product Features:

- Wide frequency range
- Low VSWR
- Low PIM
- High reliability

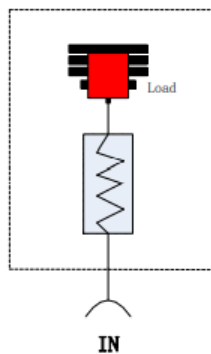


### Technical Specifications:

Electrical	
Frequency (MHz)	DC-4000
Return loss/VSWR	$\leq -20\text{dB}/1.22$
PIM, 3rd Order (dBc)	$\leq -160$ (2 x 43 dBm carrier)
Average power, maximum (W)	100
Impedance ( $\Omega$ )	50

Mechanical	
Operating temperature	-55°C to +65°C
Storage temperature	-40°C to +85°C
Relative humidity	5% - 95%
Classification of waterproof	IP67
Dimensions (H x W x D) (mm)	189x100x60mm
Net weight (with installation kit) (kg)	$\leq 2.0$
Connector	N-Female/Din-Female/4.3-10 Female

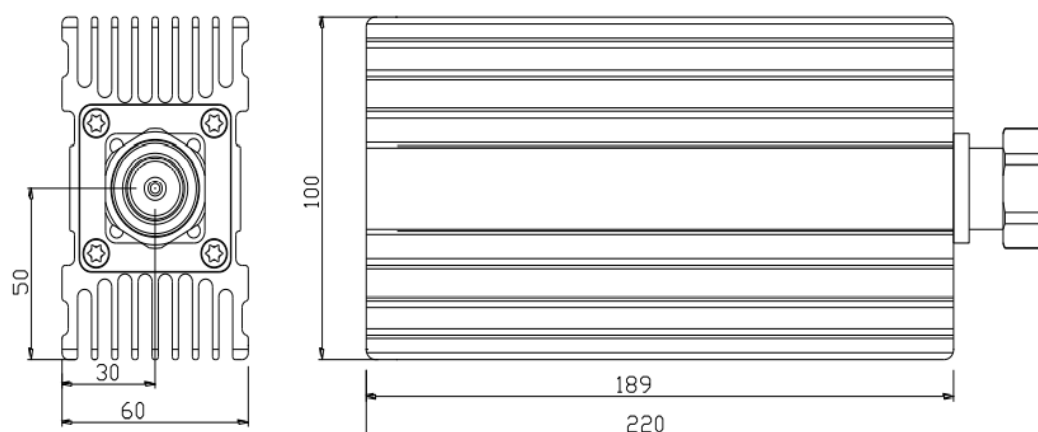
### Schematic Diagram





---

**Outline Drawing:**



## Built-in Load 3dB Hybrid Coupler (700-6000)

Model: PVL103.030760

### Product Features:

- 5G compatible
- Low insert loss
- Low PIM
- High reliability



### Technical Specifications:

Electrical	
Frequency (MHz)	700-6000
Insert loss (dB)	$\leq 0.1$
Attenuation (dB)	$\leq 3.1 \pm 1.6$
Isolation (dB)	20
VSWR	$\leq 1.35$
PIM, 3rd Order (dBc)	$\leq -160$ (2 x 43 dBm carrier)
Average power, maximum (W)	200
Impedance ( $\Omega$ )	50
DC/AISG	P1-P3 Bypass; P2-Short cut

Mechanical	
Operating temperature	-20°C to +60°C
Storage temperature	-35°C to +75°C
Relative humidity	5% - 95%
Classification of waterproof	IP66
Dimensions (H x W x D) (mm)	216x197x97.5mm
Net weight (with installation kit) (kg)	$\leq 4.5$
Connector	N-Female/Din-Female/4.3-10 Female

## Directional Coupler (698-3800)

Model: PVL103.400638

### Product Features:

- Low insert loss
- Low PIM
- High reliability

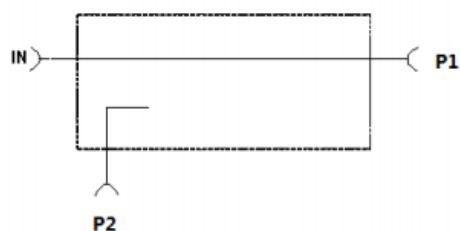


### Technical Specifications:

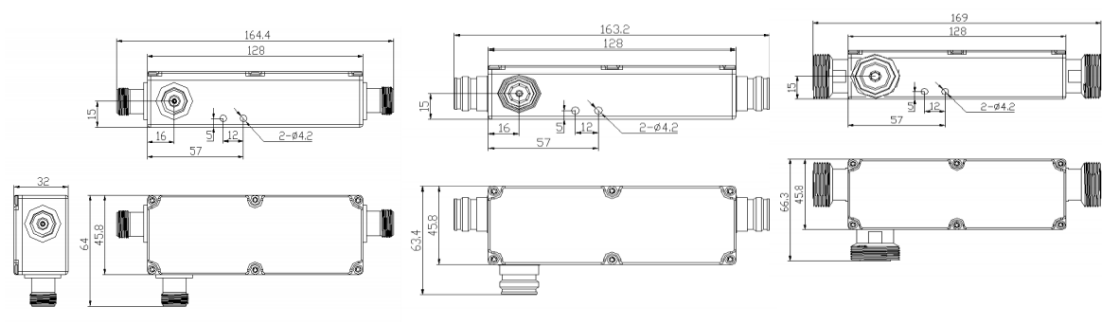
Electrical										
Coupling level	5	6	7	10	15	20	25	30	35	40
Attenuation (dB)	±0.8	±0.8	±0.8	±1.0	±1.0	±1.0	±1.2	±1.2	±1.2	±1.2
Attenuation (dB) IN→P1	2.0	1.8	1.3	0.7	0.4	0.3	0.2	0.2	0.2	0.2
Isolation (dB)	25	26	27	30	35	40	45	50	55	60
Frequency (MHz)	698-3800									
VSWR	≤1.25									
PIM, 3rd Order (dBc)	≤ -160 (2 x 43 dBm carrier)									
Average power, maximum (W)	500									
Impedance (Ω)	50									

Mechanical	
Operating temperature	-20°C to +60°C
Storage temperature	-35°C to +75°C
Relative humidity	5% - 95%
Classification of waterproof	IP67
Dimensions (H x W x D) (mm)	169x63.4x32mm
Net weight (with installation kit) (kg)	≤0.75
Connector	N-Female/Din-Female/4.3-10 Female

### Schematic Diagram



# Outline Drawing:



## Directional Coupler (698-2700)

Model: PVL103.400627

### Product Features:

- Low insert loss
- Low PIM
- High reliability

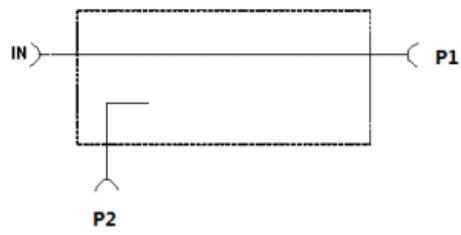


### Technical Specifications:

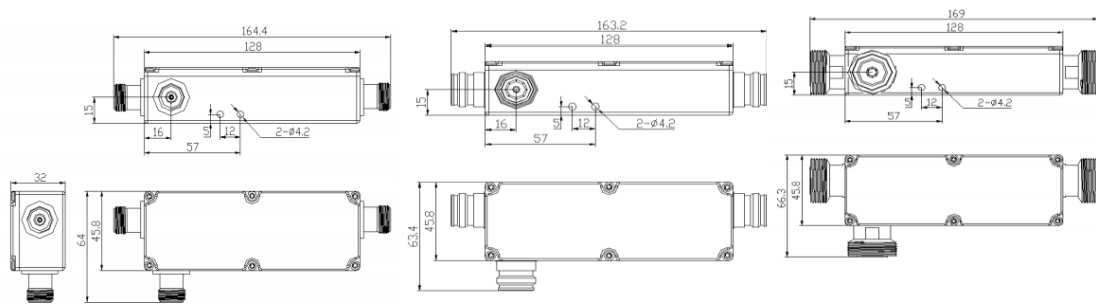
Electrical										
Coupling level	5	6	7	10	15	20	25	30	35	40
Attenuation (dB)	±0.8	±0.8	±0.8	±1.0	±1.0	±1.0	±1.2	±1.2	±1.2	±1.2
Attenuation (dB) IN→P1	2.0	1.8	1.3	0.7	0.4	0.3	0.2	0.2	0.2	0.2
Isolation (dB)	25	26	27	30	35	40	45	50	55	60
Frequency (MHz)	698-2700									
VSWR	≤1.25									
PIM, 3rd Order (dBc)	≤ -160 (2 x 43 dBm carrier)									
Average power, maximum (W)	500									
Impedance (Ω)	50									

Mechanical	
Operating temperature	-20°C to +60°C
Storage temperature	-35°C to +75°C
Relative humidity	5% - 95%
Classification of waterproof	IP67
Dimensions (H x W x D) (mm)	169x63.4x32mm
Net weight (with installation kit) (kg)	≤0.75
Connector	N-Female/Din-Female/4.3-10 Female

## Schematic Diagram



## Outline Drawing:

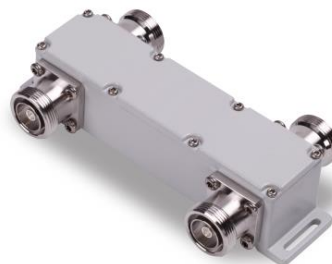


## 3dB Hybrid Coupler (698-6000)

Model: PVL104.02020660

### Product Features:

- 5G compatible
- Excellent intermodulation performance
- High stability

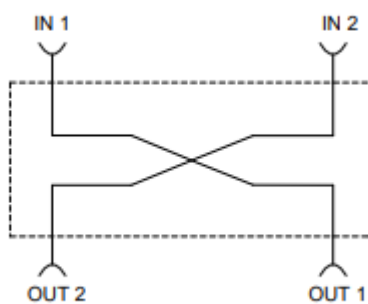


### Technical Specifications:

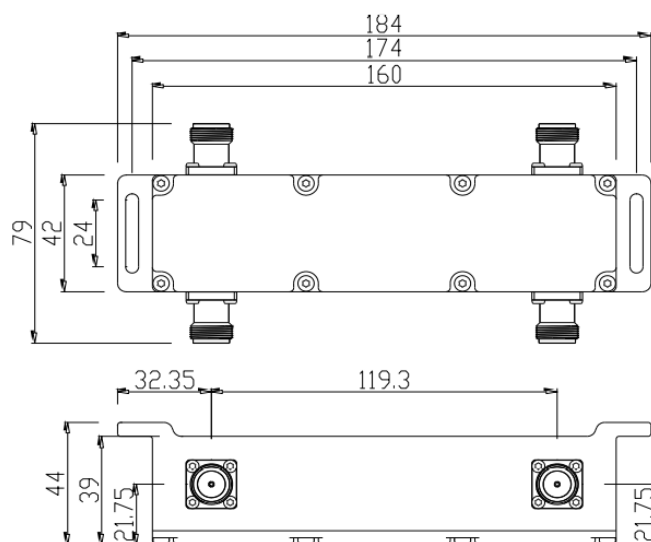
Electrical	
Frequency (MHz)	698-6000
Insertion Loss (dB)	≤3.1
Ripple in Band (dB)	≤1.6
Isolation (dB)	≥20
Return Loss/VSWR	≤ -20dB/1.22
PIM, 3rd Order (dBc)	≤ -160 (2 x 43 dBm carrier)
Average power, maximum (W)	200
Impedance (Ω)	50
DC/AISG	By-pass(max.3000mA)
Lightning protection	10KA; 10/350μs pulse

Mechanical	
Operating temperature	-20°C to +65°C
Storage temperature	-40°C to +85°C
Relative humidity	5% - 95%
Classification of waterproof	IP67
Dimensions (H x W x D) (mm)	184x42x44mm
Net weight (with installation kit) (kg)	≤0.8
Connector	N-female/Din-Female/4.3-10 Female

## Schematic Diagram



## Outline Drawing:



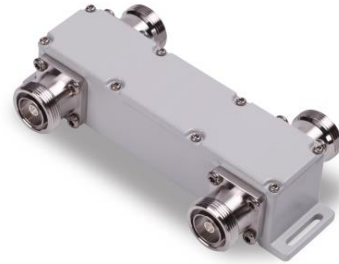


## 3dB Hybrid Coupler (550-2700)

Model: PVL104.02020527

### Product Features:

- Low insertion loss
- Excellent intermodulation performance
- High stability
- High isolation

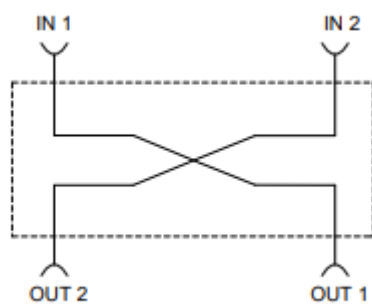


### Technical Specifications:

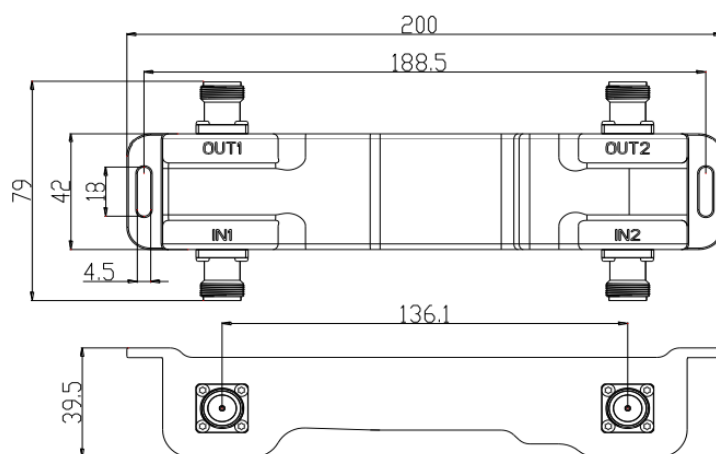
Electrical	
Frequency (MHz)	550-2700
Insertion loss (dB)	$\leq 3.8$
Ripple in Band (dB)	$\leq 1.0$
Isolation (dB)	$\geq 25$
Return Loss/VSWR	$\leq -20\text{dB}/1.22$
PIM, 3rd Order (dBc)	$\leq -160$ (2 x 43 dBm carrier)
Average power, maximum (W)	500
Impedance ( $\Omega$ )	50
DC/AISG	By-pass(max.3000mA)
Lightning protection	10KA; 10/350 $\mu$ s pulse

Mechanical	
Operating temperature	-20°C to +65°C
Storage temperature	-40°C to +85°C
Relative humidity	5% - 95%
Classification of waterproof	IP67
Dimensions (H x W x D) (mm)	200x42x39.5mm
Net weight (with installation kit) (kg)	$\leq 1.25$
Connector	N-female/Din-Female/4.3-10 Female

## Schematic Diagram



## Outline Drawing:



## 3dB Hybrid Coupler (698-2700)

Model: PVL104.02020627

### Product Features:

- Low insertion loss
- Excellent intermodulation performance
- High stability
- High isolation

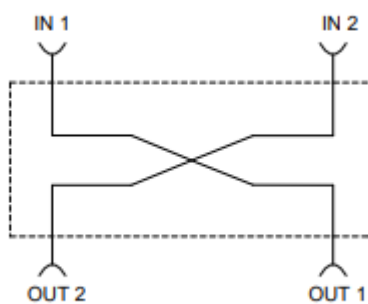


### Technical Specifications:

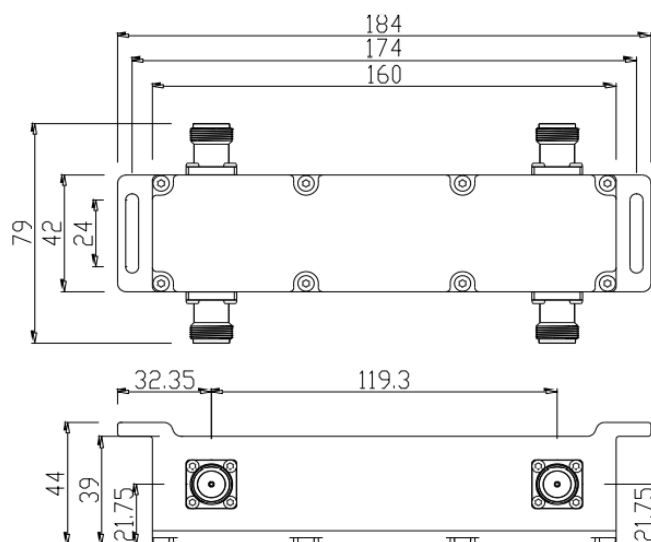
Electrical	
Frequency (MHz)	698-2700
Attenuation in-out (dB)	≤3.5
Isolation (dB)	≥28
Return Loss/VSWR	≤-20dB/1.22
PIM, 3rd Order (dBc)	≤ -160 (2 x 43 dBm carrier)
Average power, maximum (W)	300
Impedance (Ω)	50
DC/AISG	By-pass(max.3000mA)
Lightning protection	10KA; 10/350μs pulse

Mechanical	
Operating temperature	-20°C to +65°C
Storage temperature	-40°C to +85°C
Relative humidity	5% - 95%
Classification of waterproof	IP67
Dimensions (H x W x D) (mm)	184x42x44mm
Net weight (with installation kit) (kg)	≤0.8
Connector	N-female/Din-Female/4.3-10 Female

## Schematic Diagram



## Outline Drawing:



## 3x3 Matrix Hybrid Coupler (698-6000)

Model: PVL104.03030660

### Product Features:

- Low insertion loss
- Ultra-low intermodulation
- High stability
- High isolation

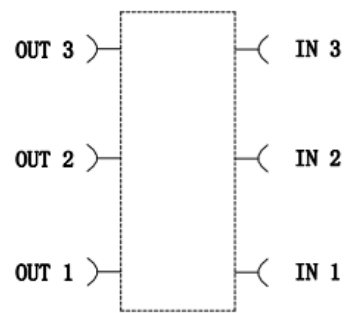


### Technical Specifications:

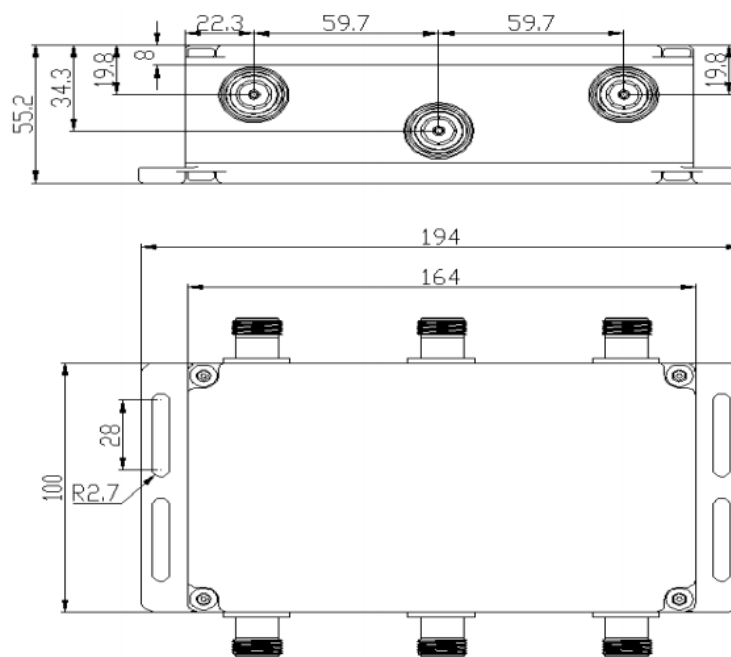
Electrical	
Frequency (MHz)	698-6000
Coupling & Variation (Contain insertion loss)	5.0±2.dB
Isolation (dB)	≥ 18
Return Loss/VSWR	≤ -20dB/1.5
PIM, 3rd Order (dBc)	≤ -160 (2 x 43 dBm carrier)
Average power, maximum (W)	500
Impedance (Ω)	50
DC/AISG	DC path IN 1→OUT 3, IN 2→OUT 2 DC path IN 3→OUT 1 (max. 6.5 A AISG2.0 conform)

Mechanical	
Operating temperature	-20°C to +60°C
Storage temperature	-40°C to +85°C
Relative humidity	5% - 95%
Classification of waterproof	IP67
Dimensions (H x W x D) (mm)	194x100x55.2mm
Net weight (with installation kit) (kg)	≤1.8
Connector	N-female/Din-Female/4.3-10 Female

## Schematic Diagram



## Outline Drawing:



## 3x3 Matrix Hybrid Coupler (698-2700)

Model: PVL104.03030627

### Product Features:

- Low insertion loss
- Ultra-low intermodulation
- High stability
- High isolation

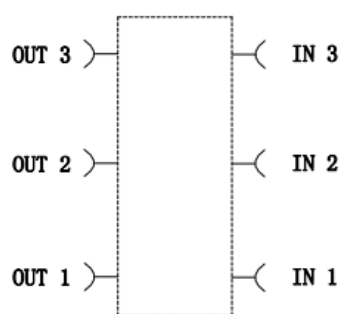


### Technical Specifications:

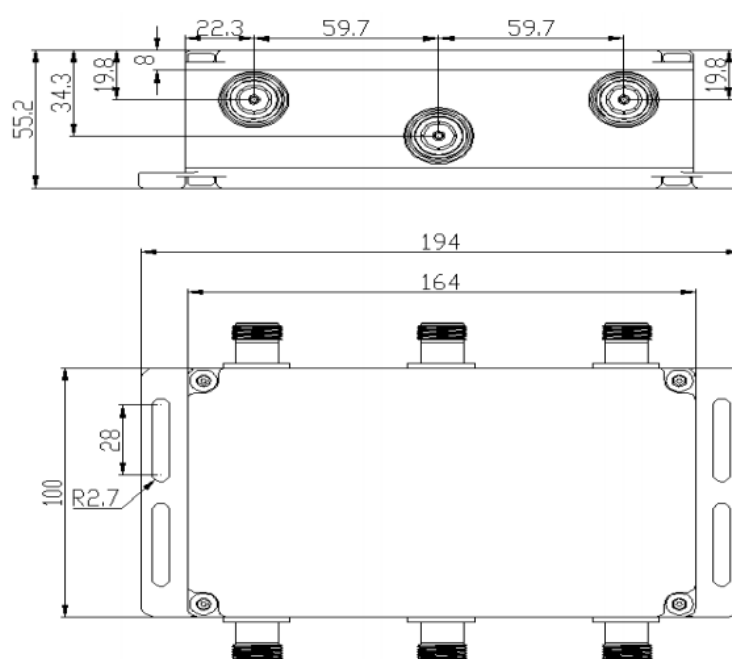
Electrical	
Frequency (MHz)	698-2700
Coupling & Variation (Contain insertion loss)	5.0±1.2dB 698-2700
Isolation (dB)	≥25
Return Loss/VSWR	≤ -20dB/1.25
PIM, 3rd Order (dBc)	≤ -155 (2 x 43 dBm carrier)
Average power, maximum (W)	500
Impedance (Ω)	50
DC/AISG	DC path IN 1→OUT 3, IN 2→OUT 2 DC path IN 3→OUT 1 (max. 6.5 A AISG2.0 conform)

Mechanical	
Operating temperature	-20°C to +60°C
Storage temperature	-40°C to +85°C
Relative humidity	5% - 95%
Classification of waterproof	IP67
Dimensions (H x W x D) (mm)	194x100x55.2mm
Net weight (with installation kit) (kg)	≤1.8
Connector	N-female/Din-Female/4.3-10 Female

## Schematic Diagram



## Outline Drawing:





## 4x4 Matrix Hybrid Coupler (698-6000)

Model: PVL104.04040660

### Product Features:

- 698-6000MHz
- Low insertion loss
- Ultra-low intermodulation
- High stability
- High isolation

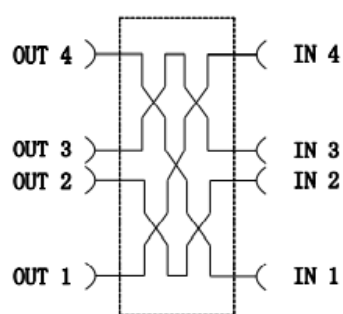


### Technical Specifications:

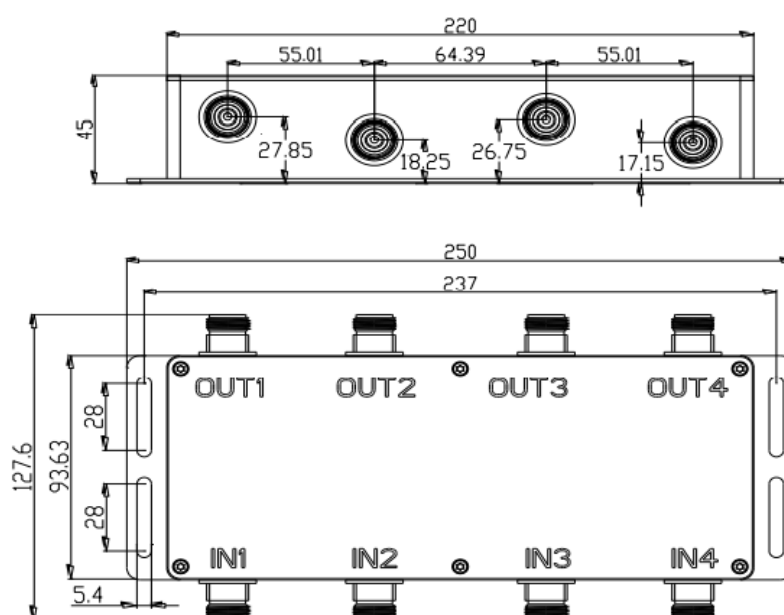
Electrical	
Frequency (MHz)	698-6000
Attenuation in-out (dB)	$\leq 6.9$
Isolation (dB)	$\geq 18$
Return Loss/VSWR	$\leq -20\text{dB}/1.5$
PIM, 3rd Order (dBc)	$\leq -160$ (2 x 43 dBm carrier)
Average power, maximum (W)	200
Impedance ( $\Omega$ )	50
DC/AISG	DC path IN 1→OUT 4, IN 2→OUT 2 DC path IN 3→OUT 3, IN 4→OUT 1 (max. 6.5 A AISG2.0 conform)
Lightning protection	N/A

Mechanical	
Operating temperature	-20°C to +65°C
Storage temperature	-40°C to +85°C
Relative humidity	5% - 95%
Classification of waterproof	IP67
Dimensions (H x W x D) (mm)	250x94x45mm
Net weight (with installation kit) (kg)	$\leq 2.0$
Connector	N-female/Din-Female/4.3-10 Female

## Schematic Diagram



## Outline Drawing:



## 4x4 Matrix Hybrid Coupler (698-2700)

Model: PVL104.04040627

### Product Features:

- 698-2700MHz
- Low insertion loss
- Ultra-low intermodulation
- High stability
- High isolation

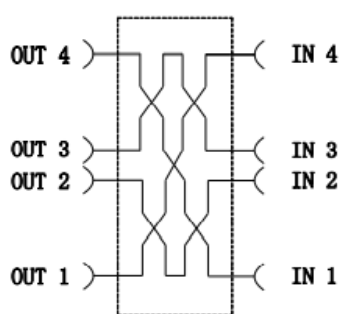


### Technical Specifications:

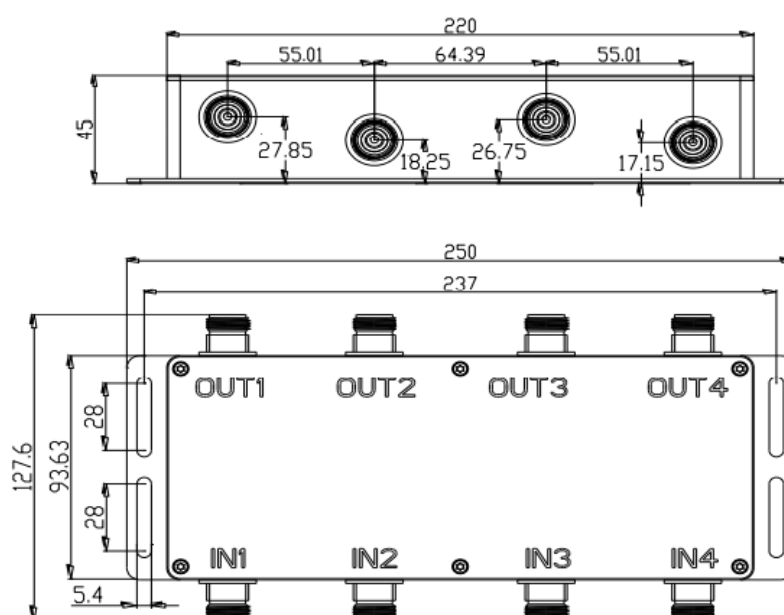
Electrical	
Frequency (MHz)	698-2700
Attenuation in-out (dB)	$\leq 6.9$
Isolation (dB)	$\geq 26$
Return Loss/VSWR	$\leq -20\text{dB}/1.22$
PIM, 3rd Order (dBc)	$\leq -160$ (2 x 43 dBm carrier)
Average power, maximum (W)	300
Impedance ( $\Omega$ )	50
DC/AISG	DC path IN 1→OUT 4, IN 2→OUT 2 DC path IN 3→OUT 3, IN 4→OUT 1 (max. 6.5 A AISG2.0 conform)
Lightning protection	N/A

Mechanical	
Operating temperature	-20°C to +65°C
Storage temperature	-40°C to +85°C
Relative humidity	5% - 95%
Classification of waterproof	IP67
Dimensions (H x W x D) (mm)	250x94x45mm
Net weight (with installation kit) (kg)	$\leq 2.0$
Connector	N-female/Din-Female/4.3-10 Female

## Schematic Diagram



## Outline Drawing:



## Indoor Diplexer Combiner (380-2500)

Model: PVL101.02010325

### Product Features:

- Low Intermodulation
- High Isolation, Low VSWR and Loss
- Low Weight
- High Reliability

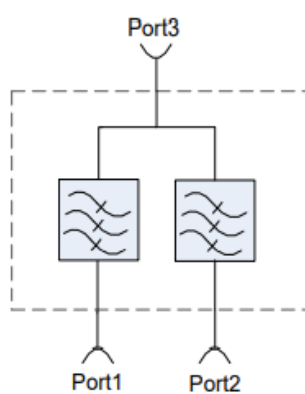


### Technical Specifications:

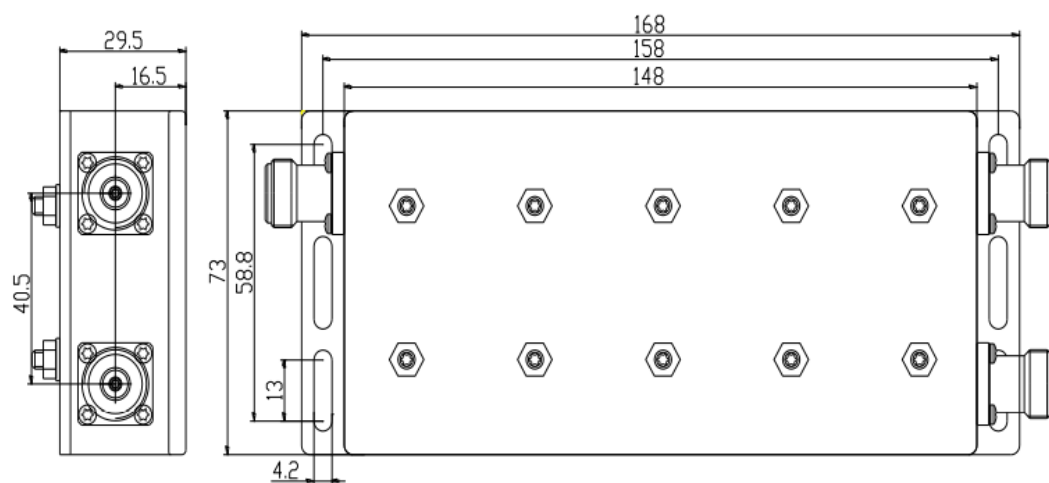
Electrical		
Frequency (MHz)	380-960	1710-2500
Insertion Loss (dB)	$\leq 0.3$	
Ripple (dB)	$\geq 0.2$	
Isolation (dB)	$\geq 80$	
Return Loss/VSWR	$\leq 18\text{dB}/1.22$	
PIM, 3rd Order (dBc)	$\leq -140$ (2 x 43 dBm carrier)	
Average power, maximum (W)	200	
Impedance ( $\Omega$ )	50	

Mechanical	
Operating temperature	-20°C to +65°C
Storage temperature	-40°C to +85°C
Relative humidity	5% - 95%
Classification of waterproof	Indoor
Dimensions (H x W x D) (mm)	148x73x29.5mm
Net weight (with installation kit) (kg)	$\leq 0.52$
Connector	N-Female

## Schematic Diagram



## Outline Drawing:



## Indoor Diplexer Combiner (380-2700)

Model: PVL101.02010327

### Product Features:

- Low Intermodulation
- High Isolation, Low VSWR and Loss
- Low Weight
- High Reliability

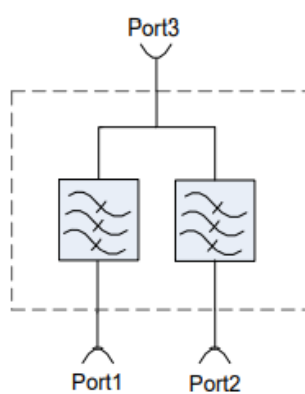


### Technical Specifications:

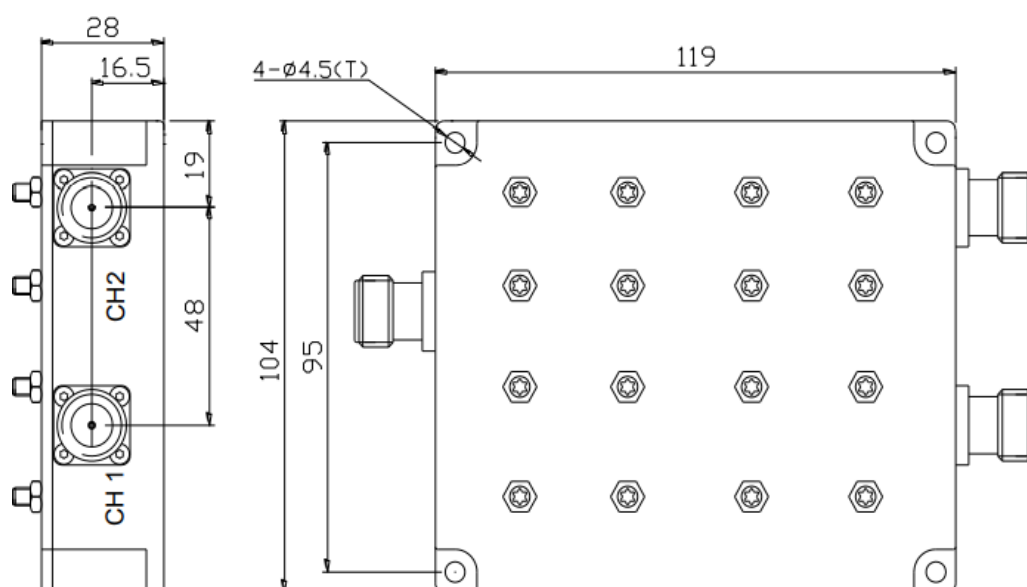
Electrical		
Frequency (MHz)	380-2200	2400-2700
Insertion Loss (dB)	≤0.4	≤0.5
Ripple (dB)	≥0.4	
Isolation (dB)	≥80	
Return Loss/VSWR	≤19dB/1.22	
PIM, 3rd Order (dBc)	≤ -140 (2 x 43 dBm carrier)	
Average power, maximum (W)	200	
Impedance (Ω)	50	

Mechanical	
Operating temperature	-20°C to +65°C
Storage temperature	-40°C to +85°C
Relative humidity	5% - 95%
Classification of waterproof	Indoor
Dimensions (H x W x D) (mm)	119x104x28mm
Net weight (with installation kit) (kg)	≤0.6
Connector	N-Female

## Schematic Diagram



## Outline Drawing:





## Indoor Diplexer Combiner (1710-2170)

Model: PVL101.02011721

### Product Features:

- Low Intermodulation
- High Isolation, Low VSWR and Loss
- Low Weight
- High Reliability

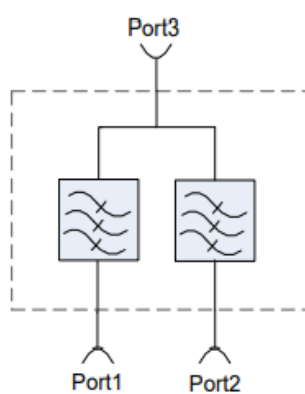


### Technical Specifications:

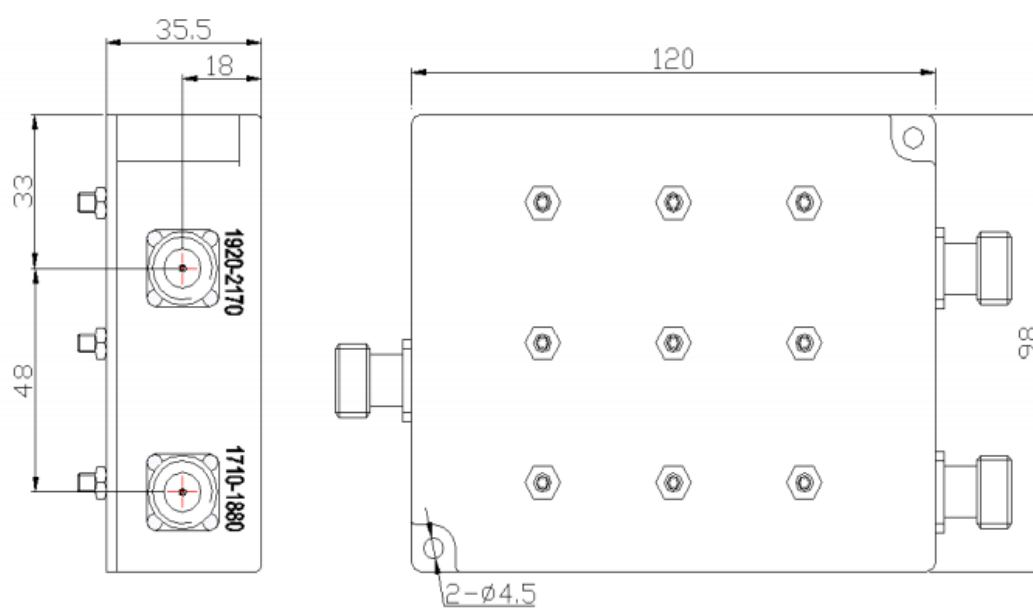
Electrical		
Frequency (MHz)	1710-1880	1920-2170
Insertion Loss (dB)	$\leq 0.6$	
Ripple (dB)	$\geq 0.5$	
Isolation (dB)	$\geq 80$	
Return Loss/VSWR	$\leq 18\text{dB}/1.22$	
PIM, 3rd Order (dBc)	$\leq -145$ (2 x 43 dBm carrier)	
Average power, maximum (W)	200	
Impedance ( $\Omega$ )	50	

Mechanical	
Operating temperature	-20°C to +65°C
Storage temperature	-40°C to +85°C
Relative humidity	5% - 95%
Classification of waterproof	Indoor
Dimensions (H x W x D) (mm)	120x98x35.5mm
Net weight (with installation kit) (kg)	$\leq 0.6$
Connector	N-Female

## Schematic Diagram



## Outline Drawing:



## Indoor Triplexer Combiner (698-2700)

Model: PVL101.03010627

### Product Features:

- Low Intermodulation
- High Isolation, Low VSWR and Loss
- Low Weight
- High Reliability

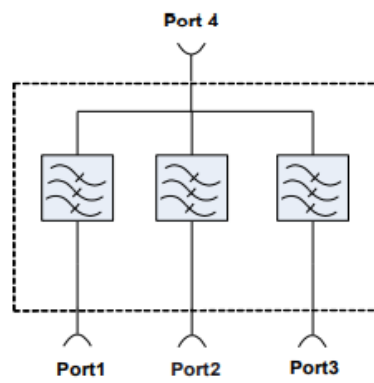


### Technical Specifications:

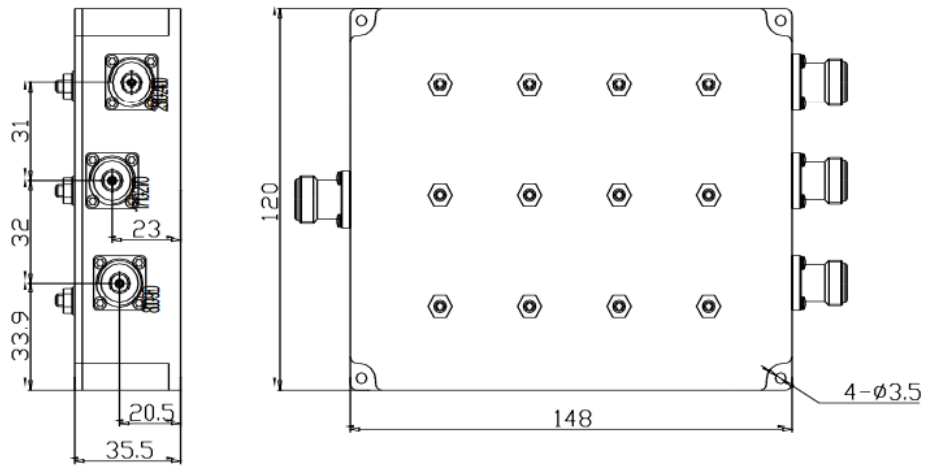
Electrical			
Frequency (MHz)	698-960	1710-2170	2400-2700
Insertion Loss (dB)	≤0.5		
Ripple (dB)	≥0.3		
Isolation (dB)	≥80		
Return Loss/VSWR	≤19dB/1.22		
PIM, 3rd Order (dBc)	≤ -140 (2 x 43 dBm carrier)		
Average power, maximum (W)	200		
Impedance (Ω)	50		

Mechanical	
Operating temperature	-20°C to +65°C
Storage temperature	-40°C to +85°C
Relative humidity	5% - 95%
Classification of waterproof	Indoor
Dimensions (H x W x D) (mm)	148x120x35.5mm
Net weight (with installation kit) (kg)	≤0.9
Connector	N-Female

## Schematic Diagram



## Outline Drawing:



## Indoor Triplexer Combiner (800-2170)

Model: PVL101.03010821

### Product Features:

- Low Intermodulation
- High Isolation, Low VSWR and Loss
- Low Weight
- High Reliability

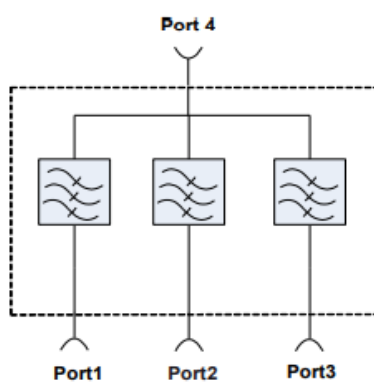


### Technical Specifications:

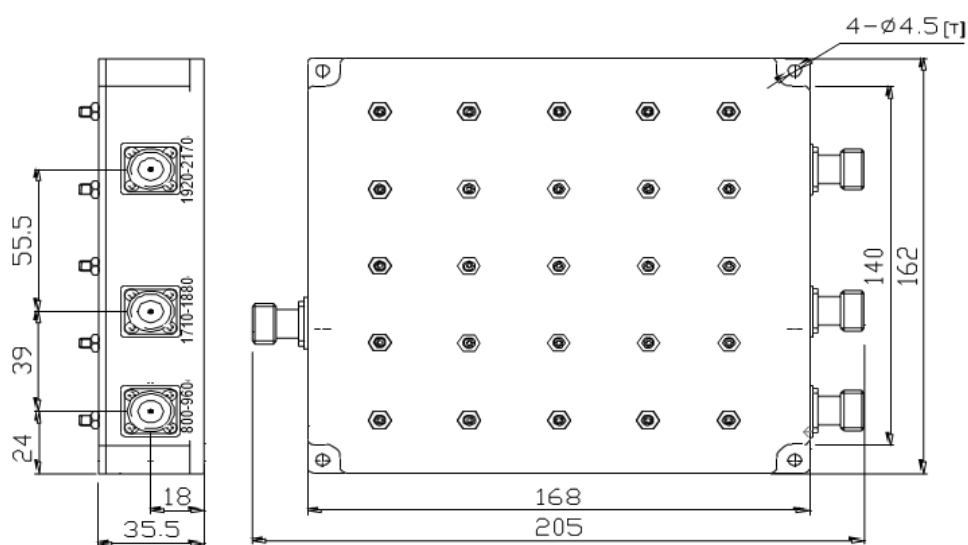
Electrical			
Frequency (MHz)	800-960	1710-1880	1920-2170
Insertion Loss (dB)	$\leq 0.6$		
Ripple (dB)	$\geq 0.4$		
Isolation (dB)	$\geq 80$		
Return Loss/VSWR	$\leq 20\text{dB}/1.22$		
PIM, 3rd Order (dBc)	$\leq -140$ (2 x 43 dBm carrier)		
Average power, maximum (W)	200		
Impedance ( $\Omega$ )	50		

Mechanical	
Operating temperature	-20°C to +65°C
Storage temperature	-40°C to +85°C
Relative humidity	5% - 95%
Classification of waterproof	Indoor
Dimensions (H x W x D) (mm)	119x104x28mm
Net weight (with installation kit) (kg)	$\leq 1.3$
Connector	N-Female

## Schematic Diagram



## Outline Drawing:



## Indoor Quadplexer Combiner (698-2400)

Model: PVL101.04010624

### Product Features:

- Low Intermodulation
- High Isolation, Low VSWR and Loss
- Low Weight
- High Reliability

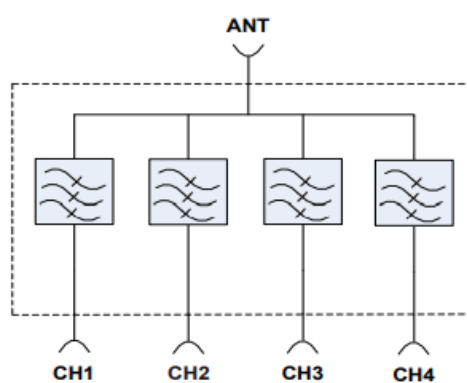


### Technical Specifications:

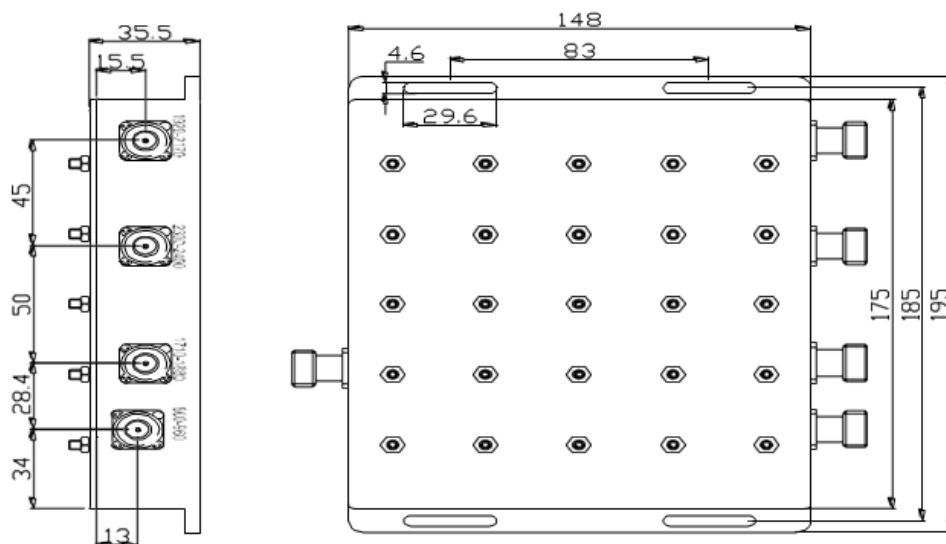
Electrical				
Frequency (MHz)	698-960	1710-1880	1920-2170	2300-2400
Insertion Loss (dB)	$\leq 0.8$			
Ripple (dB)	$\geq 0.5$			
Isolation (dB)	$\geq 80$			
Return Loss/VSWR	$\leq 20\text{dB}/1.22$			
PIM, 3rd Order (dBc)	$\leq -150$ (2 x 43 dBm carrier)			
Average power, maximum (W)	200			
Impedance ( $\Omega$ )	50			

Mechanical	
Operating temperature	-20°C to +65°C
Storage temperature	-40°C to +85°C
Relative humidity	5% - 95%
Classification of waterproof	Indoor
Dimensions (H x W x D) (mm)	175x148x35.5mm
Net weight (with installation kit) (kg)	$\leq 1.45$
Connector	N-Female

## Schematic Diagram



## Outline Drawing:





## 17in 4out POI (Point of Interface) (703-2690)

Model: PVL107.17040726

### Product Features:

- Low PIM
- High isolation
- Low VSWR and loss
- High reliability

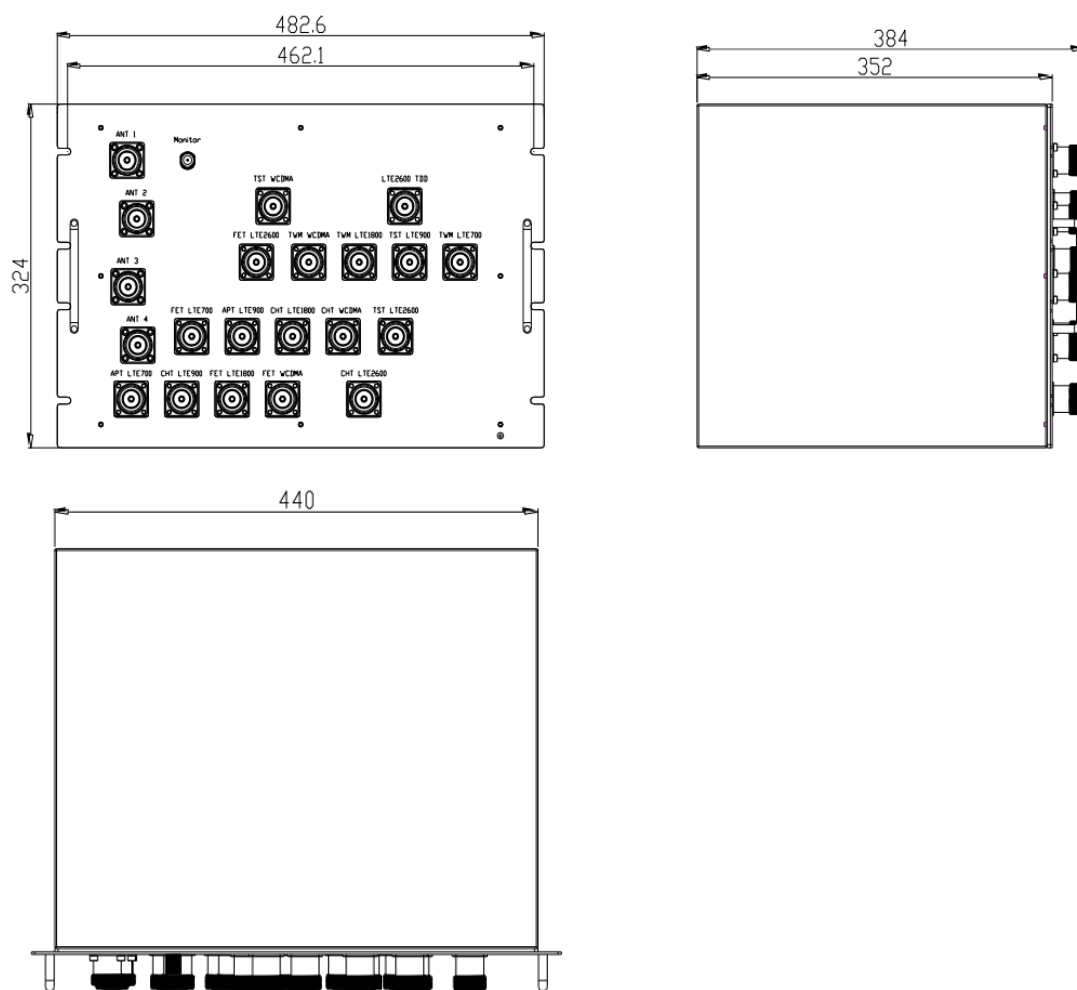


### Technical Specifications:

Electrical	
3 Ports LTE700	703-748MHz/758-803MHz
3 Ports LTE900	885-915MHz/930-960MHz
3 Ports LTE1800	1710-1785MHz/1805-1880MHz
4 Port WCDMA2100	1920-1980MHz/2110-2170MHz
1 Port LTE2600 FDD	2500-2520MHz/2620-2640MHz
1 Port LTE2600 FDD	2520-2540MHz/2640-2660MHz 2560-2570MHz/2680-2690MHz
1 Port LTE2600 FDD	2540-2560MHz/2660-2680MHz
1 Port LTE2600 TDD	2575-2615MHz
Insert loss (dB)	≤8.5 dB for LTE703MHz ~ WCDMA 2170MHz ≤10.5 dB for LTE2600MHz
Isolation (dB)	Same band ≥25 dB, Different bands≥80dB, FDD/TDD≥110dB
Return Loss	≤18dB
PIM, 3rd Order (dBc)	≤ -150 (2 x 43 dBm carrier)
Monitoring port	-40 ~ -30dBc
Average power, maximum (W)	150
Impedance (Ω)	50
Lightning protection	10KA; 10/350μs pulse

Mechanical	
Operating temperature	+10°C to +55°C
Storage temperature	0°C to +65°C
Relative humidity	5% - 95%
Classification of waterproof	Indoor, 19" rackable
Dimensions (H x W x D) (mm)	482.6x324x352mm
Net weight (without connectors) (kg)	≤40
Connector	Din-Female

## Outline Drawing:



# Power Splitter 2-way (555-3800)

Model: PVL102.01020538

## Product Features:

- Low insert loss
- Low PIM
- High reliability

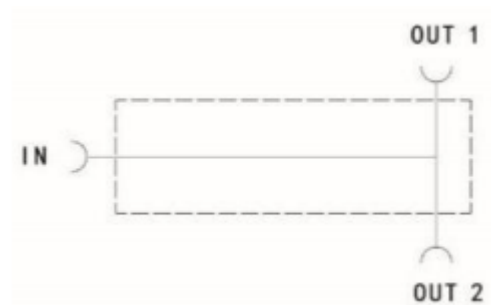


## Technical Specifications:

Electrical	
Frequency (MHz)	555-3800
VSWR	$\leq 1.25$
Split loss (dB)	$\leq 3.2$
Insert loss (dB)	$\leq 0.1$
Ripple in band (dB)	$\leq 0.3$
PIM, 3rd Order (dBc)	$\leq -160$ (2 x 43 dBm carrier)
Average power, maximum (W)	300
Impedance ( $\Omega$ )	50

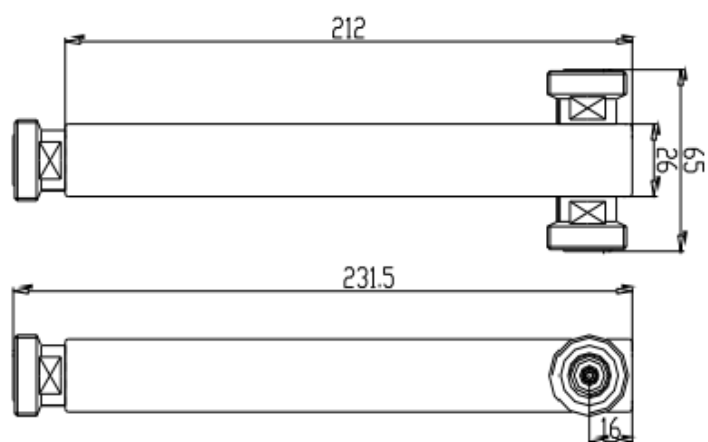
Mechanical	
Operating temperature	-30°C to +75°C
Storage temperature	-45°C to +85°C
Relative humidity	5% - 95%
Classification of waterproof	IP67
Dimensions (H x W x D) (mm)	211x26x26mm
Net weight (with installation kit) (kg)	$\leq 1.5$
Connector	N-Female/Din-Female/4.3-10 Female

## Schematic Diagram



---

**Outline Drawing:**



## Power Splitter 2-way (698-2700)

Model: PVL102.01020627

### Product Features:

- Low insert loss
- Low PIM
- High reliability

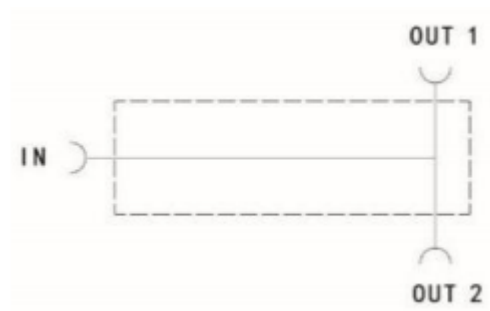


### Technical Specifications:

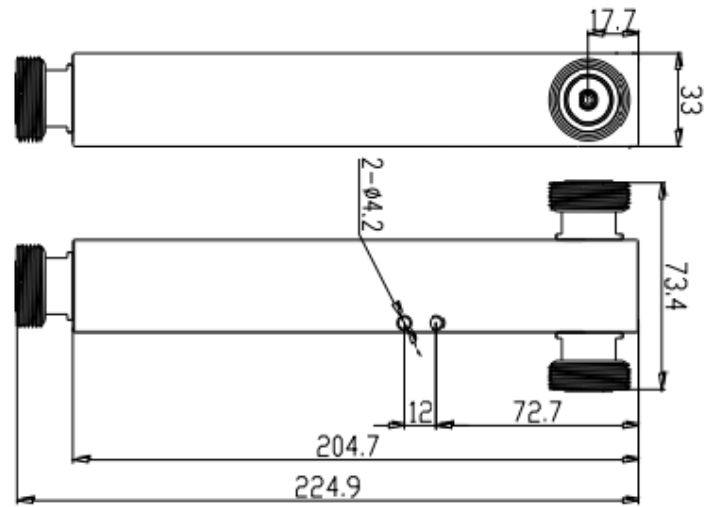
Electrical	
Frequency (MHz)	698-2700
VSWR	$\leq 1.25$
Split loss (dB)	$\leq 3.2$
Insert loss (dB)	$\leq 0.05$
Ripple in band (dB)	$\leq 0.3$
PIM, 3rd Order (dBc)	$\leq -160$ (2 x 43 dBm carrier)
Average power, maximum (W)	500
Impedance ( $\Omega$ )	50

Mechanical	
Operating temperature	-30°C to +75°C
Storage temperature	-45°C to +85°C
Relative humidity	5% - 95%
Classification of waterproof	IP67
Dimensions (H x W x D) (mm)	204.7x33x33mm
Net weight (with installation kit) (kg)	$\leq 1.5$
Connector	N-Female/Din-Female/4.3-10 Female

### Schematic Diagram



Outline Drawing:



## Power Splitter 3-way (555-3800)

Model: PVL102.01030538

### Product Features:

- Low insert loss
- Low PIM
- High reliability

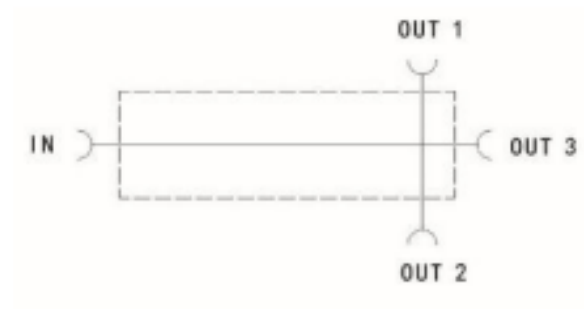


### Technical Specifications:

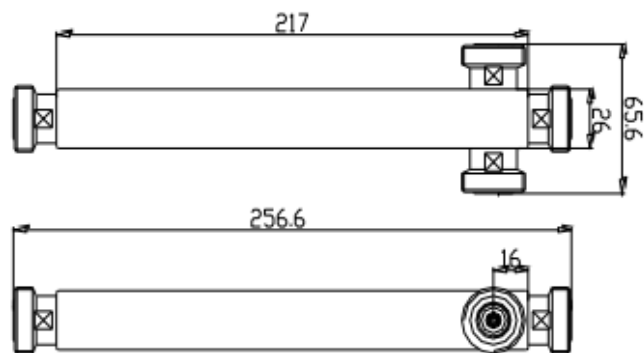
Electrical	
Frequency (MHz)	555-3800
VSWR	≤1.25
Split loss (dB)	≤5.2
Insert loss (dB)	≤0.1
Ripple in band (dB)	≤0.4
PIM, 3rd Order (dBc)	≤ -160 (2 x 43 dBm carrier)
Average power, maximum (W)	300
Impedance (Ω)	50

Mechanical	
Operating temperature	-30°C to +75°C
Storage temperature	-40°C to +85°C
Relative humidity	5% - 95%
Classification of waterproof	IP67
Dimensions (H x W x D) (mm)	217x26x26mm
Net weight (with installation kit) (kg)	≤0.55
Connector	N-Female/Din-Female/4.3-10 Female

## Schematic Diagram



## Outline Drawing:





## Power Splitter 3-way (698-2700)

Model: PVL102.01030627

### Product Features:

- Low insert loss
- Low PIM
- High reliability

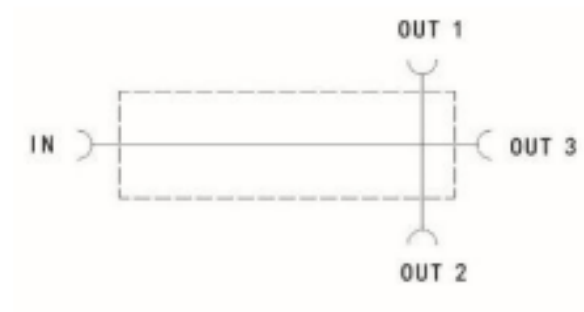


### Technical Specifications:

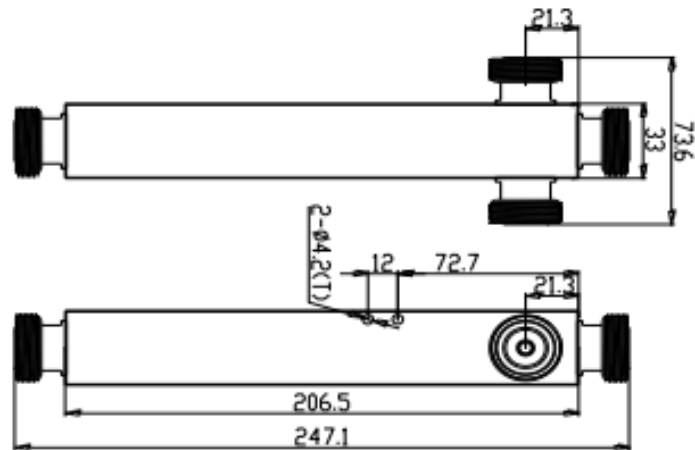
Electrical	
Frequency (MHz)	698-2700
VSWR	≤1.25
Split loss (dB)	≤5.2
Insert loss (dB)	≤0.05
Ripple in band (dB)	≤0.4
PIM, 3rd Order (dBc)	≤ -160 (2 x 43 dBm carrier)
Average power, maximum (W)	500
Impedance (Ω)	50

Mechanical	
Operating temperature	-30°C to +75°C
Storage temperature	-40°C to +85°C
Relative humidity	5% - 95%
Classification of waterproof	IP67
Dimensions (H x W x D) (mm)	206.5x33x33mm
Net weight (with installation kit) (kg)	≤1.8
Connector	N-Female/Din-Female/4.3-10 Female

## Schematic Diagram



## Outline Drawing:



## Power Splitter 4-way (555-3800)

Model: PVL102.01040538

### Product Features:

- Low insert loss
- Low PIM
- High reliability

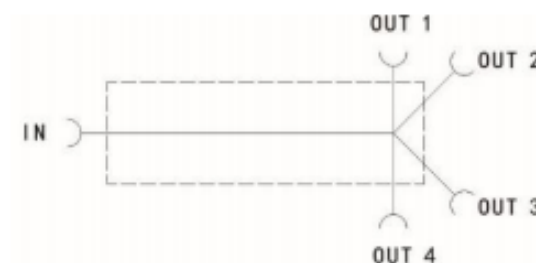


### Technical Specifications:

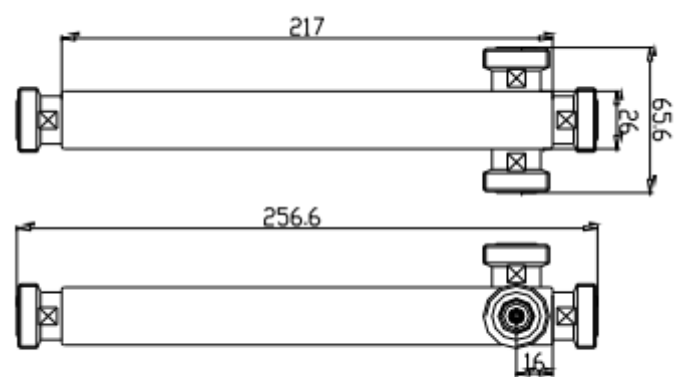
Electrical	
Frequency (MHz)	555-3800
VSWR	$\leq 1.25$
Split loss (dB)	$\leq 6.4$
Insert loss (dB)	$\leq 0.1$
Ripple in band (dB)	$\leq 0.5$
PIM, 3rd Order (dBc)	$\leq -160$ (2 x 43 dBm carrier)
Average power, maximum (W)	300
Impedance ( $\Omega$ )	50

Mechanical	
Operating temperature	-30°C to +75°C
Storage temperature	-40°C to +85°C
Relative humidity	5% - 95%
Classification of waterproof	IP67
Dimensions (H x W x D) (mm)	217x26x26mm
Net weight (with installation kit) (kg)	$\leq 0.65$
Connector	N-Female/Din-Female/4.3-10 Female

### Schematic Diagram



Outline Drawing:



# Power Splitter 4-way (698-2700)

Model: PVL102.01040627

## Product Features:

- Low insert loss
- Low PIM
- High reliability

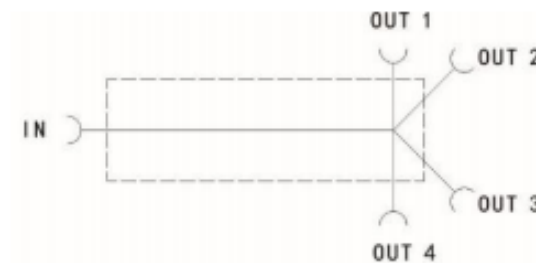


## Technical Specifications:

Electrical	
Frequency (MHz)	698-2700
VSWR	$\leq 1.25$
Split loss (dB)	$\leq 6.4$
Insert loss (dB)	$\leq 0.05$
Ripple in band (dB)	$\leq 0.5$
PIM, 3rd Order (dBc)	$\leq -160$ (2 x 43 dBm carrier)
Average power, maximum (W)	500
Impedance ( $\Omega$ )	50

Mechanical	
Operating temperature	-30°C to +75°C
Storage temperature	-40°C to +85°C
Relative humidity	5% - 95%
Classification of waterproof	IP67
Dimensions (H x W x D) (mm)	235.5x33x33mm
Net weight (with installation kit) (kg)	$\leq 2.1$
Connector	N-Female/Din-Female/4.3-10 Female

## Schematic Diagram



### Outline Drawing:

## Power Splitter 8-way (698-2700)

Model: PVL102.01080627

### Product Features:

- Low insert loss
- Low PIM
- High reliability



### Technical Specifications:

Electrical	
Frequency (MHz)	698-2700
VSWR	$\leq 1.25$
Split loss (dB)	$\leq 9.0$
Insert loss (dB)	$\leq 1.2$
Ripple in band (dB)	$\leq 0.5$
PIM, 3rd Order (dBc)	$\leq -160$ (2 x 43 dBm carrier)
Average power, maximum (W)	50
Impedance ( $\Omega$ )	50

Mechanical	
Operating temperature	-30°C to +75°C
Storage temperature	-40°C to +85°C
Relative humidity	5% - 95%
Classification of waterproof	IP65
Dimensions (H x W x D) (mm)	235.5x33x33mm
Net weight (with installation kit) (kg)	$\leq 2.1$
Connector	N-Female/Din-Female/4.3-10 Female

## Power Tapper (698-6000)

Model: PVL108.300660

### Product Features:

- 5G compatible
- Low insert loss
- Low PIM
- High reliability



### Technical Specifications:

Electrical							
Frequency (MHz)	698-960/1700-2700/2700-6000						
Coupling level	3	6	10	13	15	20	30
Coupling value (dB)	4.8±0.8	7.0±0.8	10.4±1.0	13.2±1.25	15.1±1.25	20.1±1.5	30.1±2
Insert loss (dB)	≤3.1	≤2.0	≤1.2	≤1.0	≤0.8	≤0.5	≤0.4
VSWR	≤1.3@698-960MHz&1700-2700; ≤1.5@2700-6000MHz						
PIM, 3rd Order (dBc)	≤ -161 (2 x 43 dBm carrier)						
Average power, maximum (W)	200						
Impedance (Ω)	50						

Mechanical	
Operating temperature	-20°C to +60°C
Storage temperature	-35°C to +75°C
Relative humidity	5% - 95%
Classification of waterproof	IP67
Dimensions (H x W x D) (mm)	105x25x25mm
Net weight (kg)	≤0.50
Connector	N-Female/Din-Female/4.3-10 Female



## Power Tapper (698-3800)

Model: PVL108.300638

### Product Features:

- 5G compatible
- Low insert loss
- Low PIM
- High reliability



### Technical Specifications:

Electrical							
Frequency (MHz)	698-3800						
Coupling level	3	6	10	13	15	20	30
Coupling value (dB)	4.8±0.8	7.0±0.8	10.4±1.0	13.2±1.25	15.1±1.25	20.1±1.5	30.1±2
Insert loss (dB)	≤3.1	≤2.0	≤1.2	≤1.0	≤0.8	≤0.5	≤0.4
VSWR	≤1.3						
PIM, 3rd Order (dBc)	≤ -160 (2 x 43 dBm carrier)						
Average power, maximum (W)	200						
Impedance (Ω)	50						

Mechanical	
Operating temperature	-20°C to +60°C
Storage temperature	-35°C to +75°C
Relative humidity	5% - 95%
Classification of waterproof	IP67
Dimensions (H x W x D) (mm)	105x25x25mm
Net weight (kg)	≤0.50
Connector	N-Female/Din-Female/4.3-10 Female

## Power Tapper (400-2700)

Model: PVL108.300427

### Product Features:

- Low insert loss
- Low PIM
- High reliability



### Technical Specifications:

Electrical							
Frequency (MHz)	400-960/1710-2700						
Coupling level	3	6	10	13	15	20	30
Coupling value (dB)	4.8±0.8	7.0±0.8	10.4±1.0	13.2±1.25	15.1±1.25	20.1±1.5	30.1±1.3
Insert loss (dB)	≤3.1	≤2.0	≤1.2	≤1.0	≤0.8	≤0.5	≤0.4
VSWR	≤1.3						
PIM, 3rd Order (dBc)	≤ -163 (2 x 43 dBm carrier)						
Average power, maximum (W)	500						
Impedance (Ω)	50						

Mechanical	
Operating temperature	-20°C to +60°C
Storage temperature	-35°C to +75°C
Relative humidity	5% - 95%
Classification of waterproof	IP66
Dimensions (H x W x D) (mm)	138x46x25mm
Net weight (kg)	≤0.50
Connector	N-Female/Din-Female/4.3-10 Female



## Diplexer Combiner (555-2700)

Model: PVL201.02010527

### Product Features:

- 60 dB input isolation
- Very low insertion loss
- Excellent intermodulation performance
- Built-in lightning protection
- Wall or mast mounting

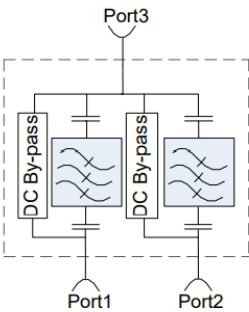


### Technical Specifications:

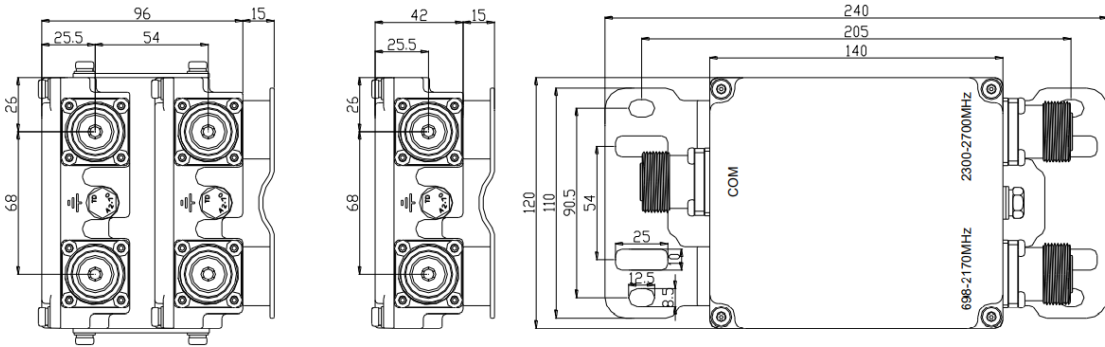
Electrical		
Frequency (MHz)	555-2180	2300-2700
Insertion Loss (dB)	$\leq 0.4$	
Isolation (dB)	$\geq 60$	
Return Loss/VSWR	$\leq -20\text{dB}/1.22$	
PIM, 3rd Order (dBc)	$\leq -155$ (2 x 43 dBm carrier)	
Average power, maximum (W)	200	
Impedance ( $\Omega$ )	50	
DC/AISG	By-pass(max.3000mA)	
Lightning protection	10KA; 10/350 $\mu$ s pulse	

Mechanical	
Operating temperature	-20°C to +65°C
Storage temperature	-40°C to +85°C
Relative humidity	5% - 95%
Classification of waterproof	IP67
Dimensions (H x W x D) (mm)	140x120x42mm
Net weight (with installation kit) (kg)	$\leq 1.2$
Connector	Din-Female/4.3-10 Female

# Schematic Diagram



# Outline Drawing:



## Diplexer Combiner (698-960)

Model: PVL201.02010609

### Product Features:

- 50 dB input isolation
- Very low insertion loss
- Excellent intermodulation performance
- Built-in lightning protection
- Wall or mast mounting

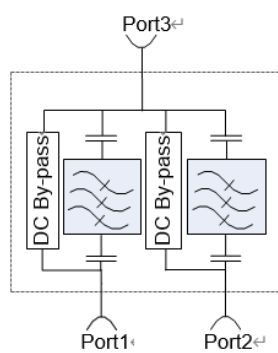


### Technical Specifications:

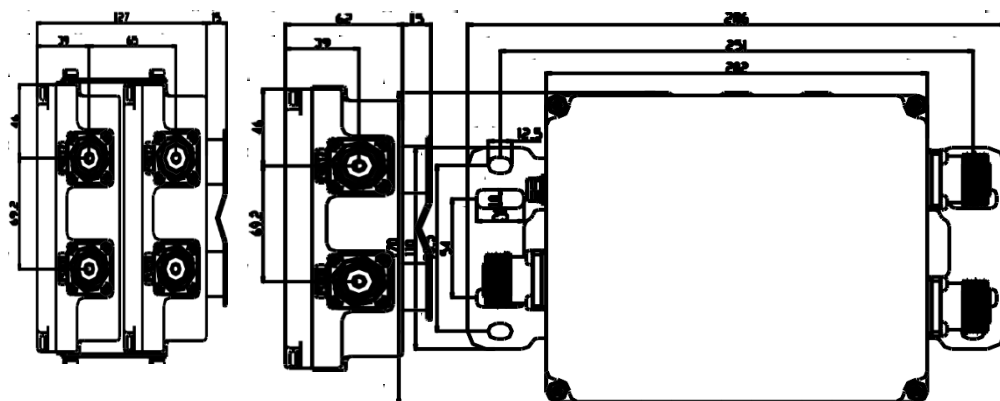
Electrical		
Frequency (MHz)	698-862	880-960
Insertion Loss (dB)	≤0.5	
Isolation (dB)	≥50	
Return Loss/VSWR	≤ -20dB/1.22	
PIM, 3rd Order (dBc)	≤ -160 (2 x 43 dBm carrier)	
Average power, maximum (W)	200	
Impedance (Ω)	50	
DC/AISG	By-pass(max.3000mA)	
Lightning protection	10KA; 10/350μs pulse	

Mechanical	
Operating temperature	-20°C to +65°C
Storage temperature	-40°C to +85°C
Relative humidity	5% - 95%
Classification of waterproof	IP67
Dimensions (H x W x D) (mm)	202x170x62mm
Net weight (with installation kit) (kg)	≤2.8
Connector	Din-Female/4.3-10 Female

## Schematic Diagram



### Outline Drawing:



## Diplexer Combiner (698-3800)

Model: PVL201.02010638

### Product Features:

- 40 dB input isolation
- Very low insertion loss
- Excellent intermodulation performance
- Built-in lightning protection
- Wall or mast mounting



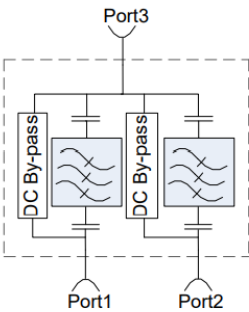
### Technical Specifications:

Electrical		
Frequency (MHz)	698-2700	3300-3800
Insertion Loss (dB)	≤0.5	
Isolation (dB)	≥60	
Return Loss/VSWR	≤ -20dB/1.25	
PIM, 3rd Order (dBc)	≤ -155 (2 x 43 dBm carrier)	
Average power, maximum (W)	200	
Impedance (Ω)	50	
DC/AISG	By-pass(max.3000mA)	
Lightning protection	10KA; 10/350μs pulse	

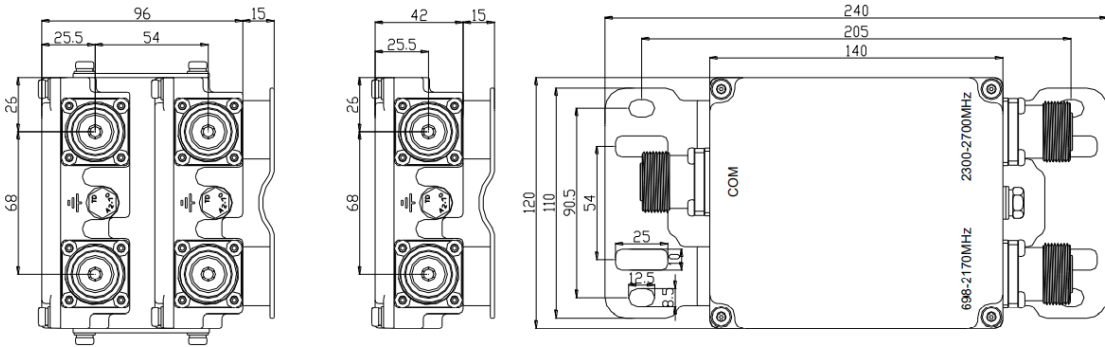
Mechanical	
Operating temperature	-20°C to +65°C
Storage temperature	-40°C to +85°C
Relative humidity	5% - 95%
Classification of waterproof	IP67
Dimensions (H x W x D) (mm)	140x120x42mm
Net weight (with installation kit) (kg)	≤1.4
Connector	Din-Female/4.3-10 Female



# Schematic Diagram



# Outline Drawing:



## Diplexer Combiner (1710-2400)

Model: PVL201.02011724

### Product Features:

- 50 dB input isolation
- Very low insertion loss
- Excellent intermodulation performance
- Built-in lightning protection
- Wall or mast mounting

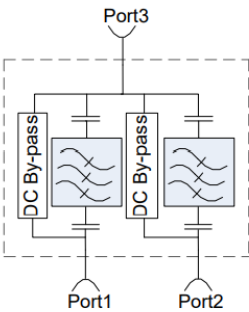


### Technical Specifications:

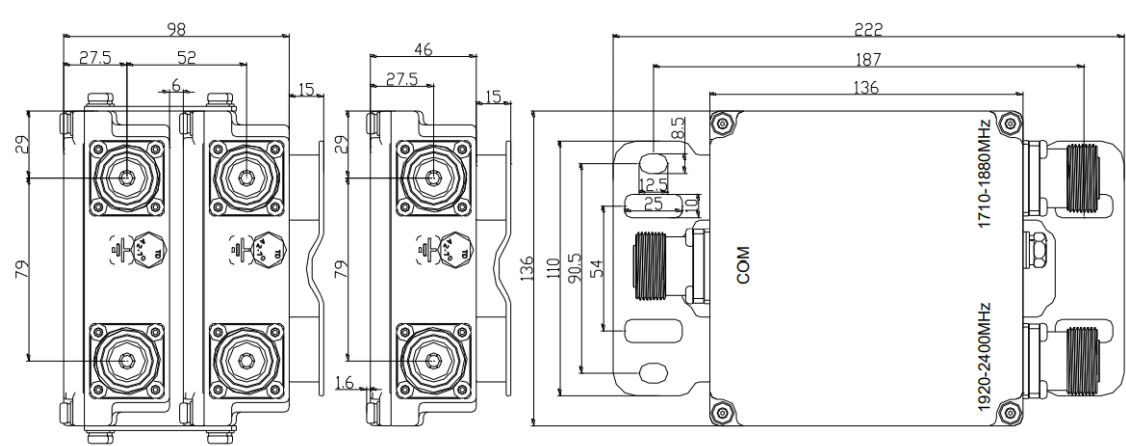
Electrical		
Frequency (MHz)	1710-1880	1920-2400
Insertion Loss (dB)	≤0.4	
Isolation (dB)	≥50	
Return Loss/VSWR	≤ -20dB/1.22	
PIM, 3rd Order (dBc)	≤ -160 (2 x 43 dBm carrier)	
Average power, maximum (W)	200	
Impedance (Ω)	50	
DC/AISG	By-pass(max.3000mA)	
Lightning protection	10KA; 10/350μs pulse	

Mechanical	
Operating temperature	-20°C to +65°C
Storage temperature	-40°C to +85°C
Relative humidity	5% - 95%
Classification of waterproof	IP67
Dimensions (H x W x D) (mm)	136x136x46mm
Net weight (with installation kit) (kg)	≤1.4
Connector	Din-Female/4.3-10 Female

# Schematic Diagram



# Outline Drawing:



## Diplexer Combiner (1710-2700)

Model: PVL201.02011727

### Product Features:

- 50 dB input isolation
- Very low insertion loss
- Excellent intermodulation performance
- Built-in lightning protection
- Wall or mast mounting

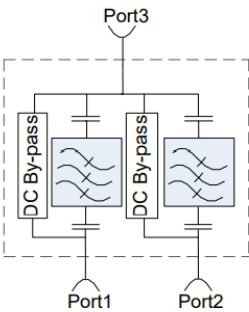


### Technical Specifications:

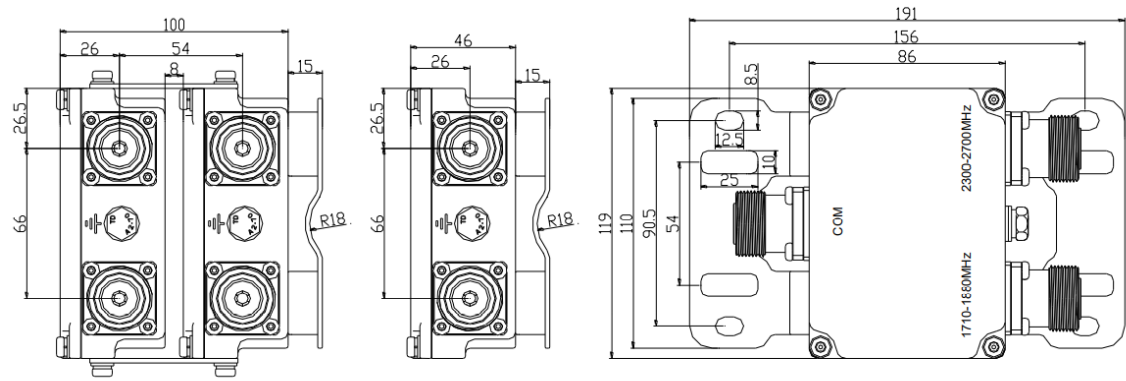
Electrical		
Frequency (MHz)	1710-1880	2300-2700
Insertion Loss (dB)	≤0.3	
Isolation (dB)	≥50	
Return Loss/VSWR	≤ -20dB/1.22	
PIM, 3rd Order (dBc)	≤ -160 (2 x 43 dBm carrier)	
Average power, maximum (W)	200	
Impedance (Ω)	50	
DC/AISG	By-pass(max.3000mA)	
Lightning protection	10KA; 10/350μs pulse	

Mechanical	
Operating temperature	-20°C to +65°C
Storage temperature	-40°C to +85°C
Relative humidity	5% - 95%
Classification of waterproof	IP67
Dimensions (H x W x D) (mm)	119x86x46mm
Net weight (with installation kit) (kg)	≤1.2
Connector	Din-Female/4.3-10 Female

# Schematic Diagram



# Outline Drawing:



## Triplexer Combiner (698-2200)

Model: PVL201.03010622

### Product Features:

- 50 dB input isolation
- Very low insertion loss
- Excellent intermodulation performance
- Built-in lightning protection
- Wall or mast mounting

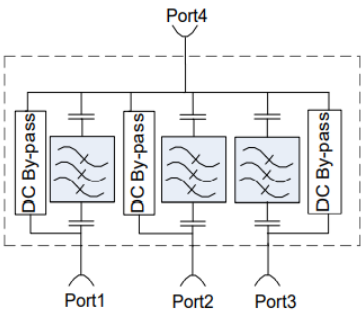


### Technical Specifications:

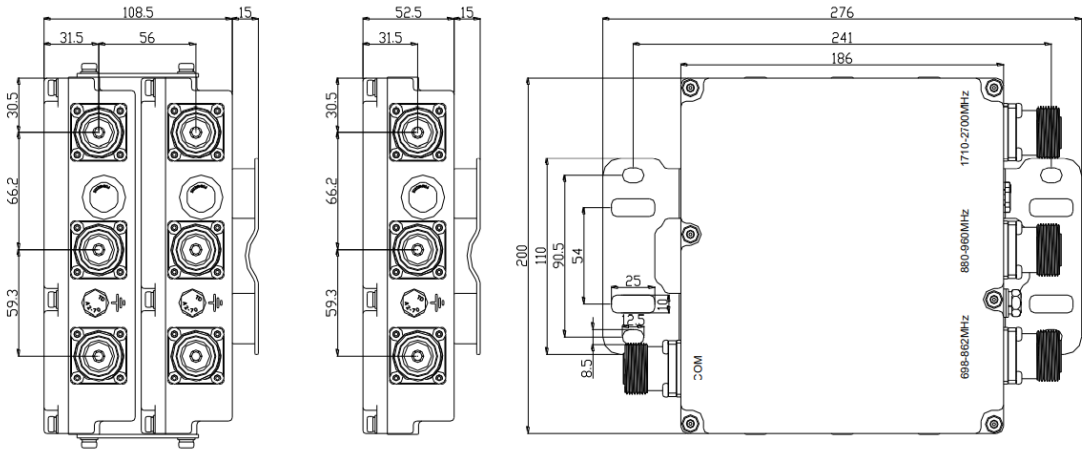
Electrical			
Frequency (MHz)	698-960	1695-1780/2110-2200	1850-2000
Insertion Loss (dB)	≤0.3		
Isolation (dB)	≥50		
Return Loss/VSWR	≤-20dB/1.22		
PIM, 3rd Order (dBc)	≤ -160 (2 x 43 dBm carrier)		
Average power, maximum (W)	200		
Impedance (Ω)	50		
DC/AISG	By-pass(max.3000mA)		
Lightning protection	10KA; 10/350μs pulse		

Mechanical	
Operating temperature	-20°C to +65°C
Storage temperature	-40°C to +85°C
Relative humidity	5% - 95%
Classification of waterproof	IP67
Dimensions (H x W x D) (mm)	200x186x52.5mm
Net weight (with installation kit) (kg)	≤3.3
Connector	Din-Female/4.3-10 Female

# Schematic Diagram



# Outline Drawing:



## Triplexer Combiner (698-2700)

Model: PVL201.03010627

### Product Features:

- 50 dB input isolation
- Very low insertion loss
- Excellent intermodulation performance
- Built-in lightning protection
- Wall or mast mounting



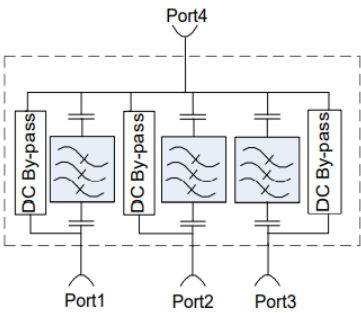
### Technical Specifications:

Electrical			
Frequency (MHz)	698-862	880-960	1710-2700
Insertion Loss (dB)	≤0.4		
Isolation (dB)	≥50		
Return Loss/VSWR	≤ -20dB/1.22		
PIM, 3rd Order (dBc)	≤ -160 (2 x 43 dBm carrier)		
Average power, maximum (W)	200		
Impedance (Ω)	50		
DC/AISG	By-pass(max.3000mA)		
Lightning protection	10KA; 10/350μs pulse		

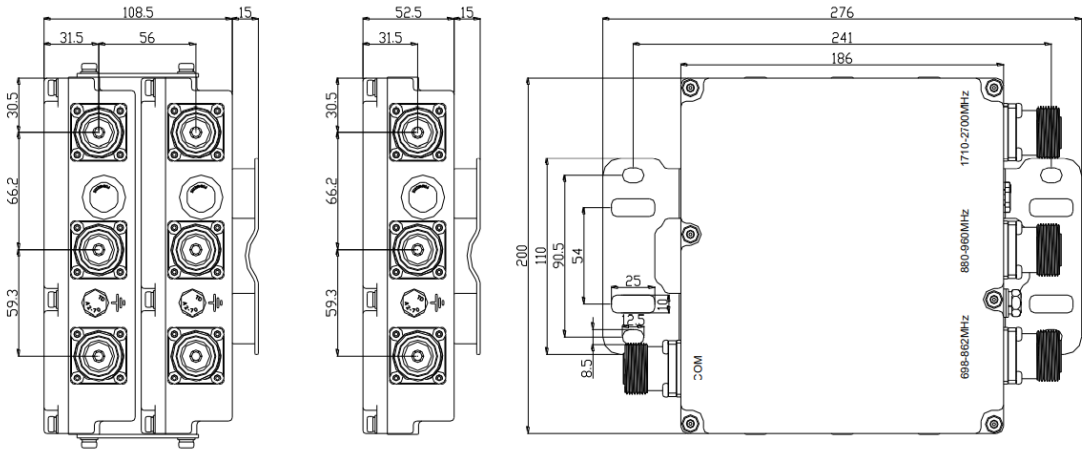
Mechanical	
Operating temperature	-20°C to +65°C
Storage temperature	-40°C to +85°C
Relative humidity	5% - 95%
Classification of waterproof	IP67
Dimensions (H x W x D) (mm)	200x186x52.5mm
Net weight (with installation kit) (kg)	≤3.3
Connector	Din-Female/4.3-10 Female



# Schematic Diagram



# Outline Drawing:



## Triplexer Combiner (1710-2700)

Model: PVL201.03011727

### Product Features:

- 50 dB input isolation
- Very low insertion loss
- Excellent intermodulation performance
- Built-in lightning protection
- Wall or mast mounting

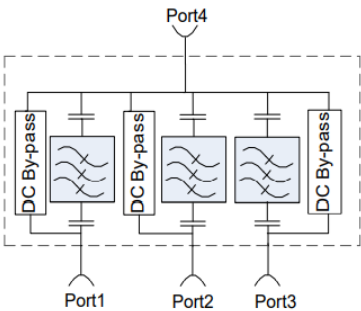


### Technical Specifications:

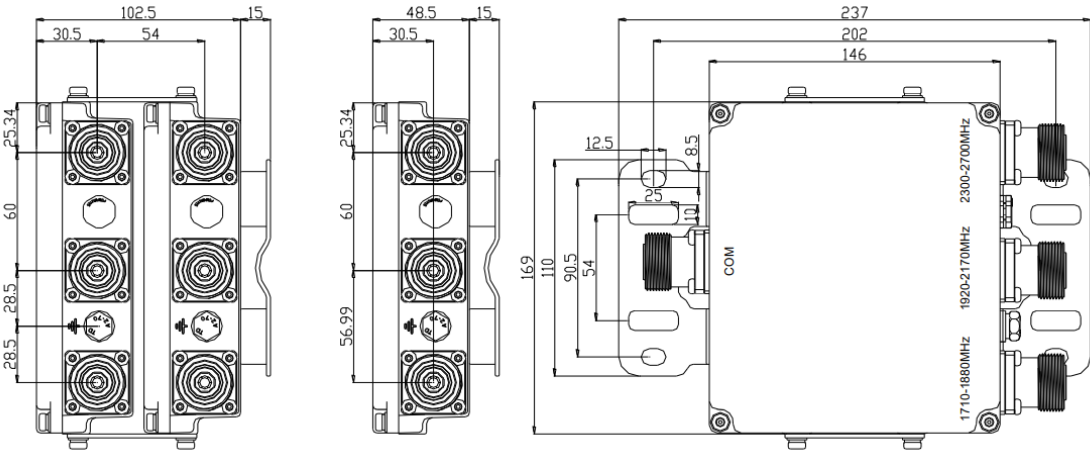
Electrical			
Frequency (MHz)	1710-1880	1920-2170	2300-2700
Insertion Loss (dB)	≤0.3		
Isolation (dB)	≥50		
Return Loss/VSWR	≤-20dB/1.22		
PIM, 3rd Order (dBc)	≤ -160 (2 x 43 dBm carrier)		
Average power, maximum (W)	200		
Impedance (Ω)	50		
DC/AISG	By-pass(max.3000mA)		
Lightning protection	10KA; 10/350μs pulse		

Mechanical	
Operating temperature	-20°C to +65°C
Storage temperature	-40°C to +85°C
Relative humidity	5% - 95%
Classification of waterproof	IP67
Dimensions (H x W x D) (mm)	169x146x48.5mm
Net weight (with installation kit) (kg)	≤2.3
Connector	Din-Female/4.3-10 Female

# Schematic Diagram



# Outline Drawing:



## Quadplexer Combiner (698-2700)

Model: PVL201.04010627

### Product Features:

- 50 dB input isolation
- Very low insertion loss
- Excellent intermodulation performance
- Built-in lightning protection
- Wall or mast mounting

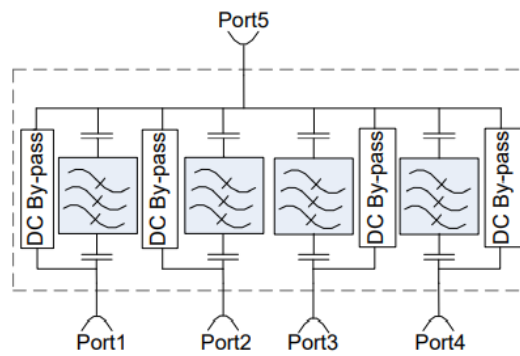


### Technical Specifications:

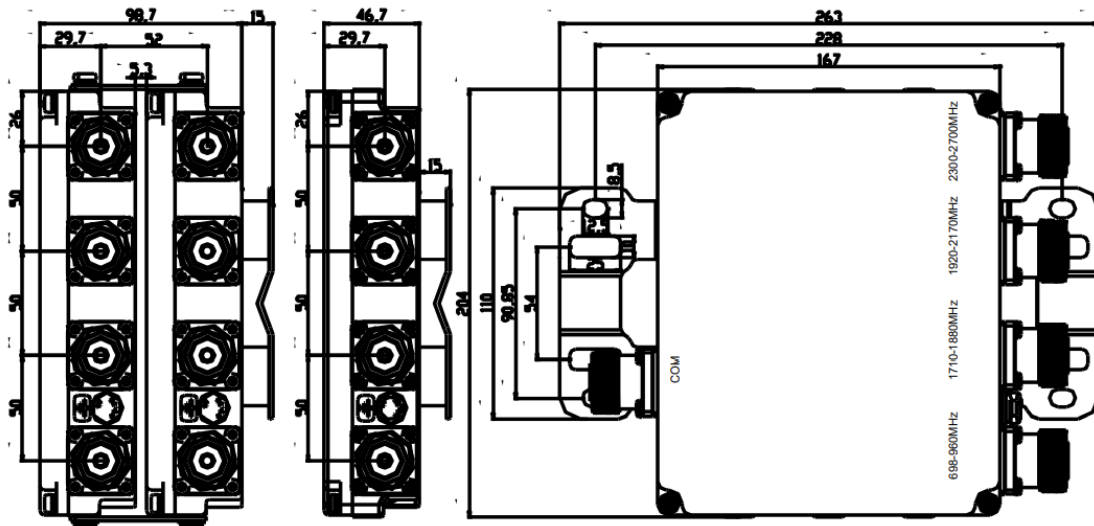
Electrical				
Frequency (MHz)	698-960	1710-1880	1920-2170	2300-2700
Insertion Loss (dB)	$\leq 0.35$			
Isolation (dB)	$\geq 50$			
Return Loss/VSWR	$\leq -20\text{dB}/1.22$			
PIM, 3rd Order (dBc)	$\leq -160$ (2 x 43 dBm carrier)			
Average power, maximum (W)	200			
Impedance ( $\Omega$ )	50			
DC/AISG	By-pass(max.3000mA)			
Lightning protection	10KA; 10/350 $\mu$ s pulse			

Mechanical	
Operating temperature	-20°C to +65°C
Storage temperature	-40°C to +85°C
Relative humidity	5% - 95%
Classification of waterproof	IP67
Dimensions (H x W x D) (mm)	204x167x46.7mm
Net weight (with installation kit) (kg)	$\leq 3$
Connector	Din-Female/4.3-10 Female

## Schematic Diagram



### Outline Drawing:



## Pentaplexer Combiner (694-2700)

Model: PVL201.05010627

### Product Features:

- 50 dB input isolation
- Very low insertion loss
- Excellent intermodulation performance
- Built-in lightning protection
- Wall or mast mounting

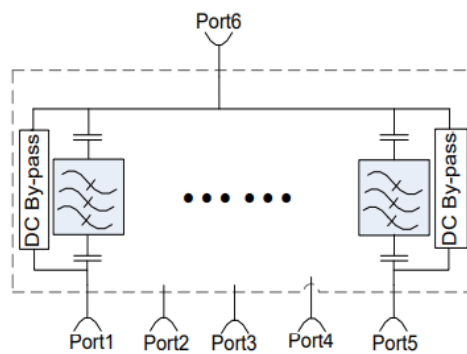


### Technical Specifications:

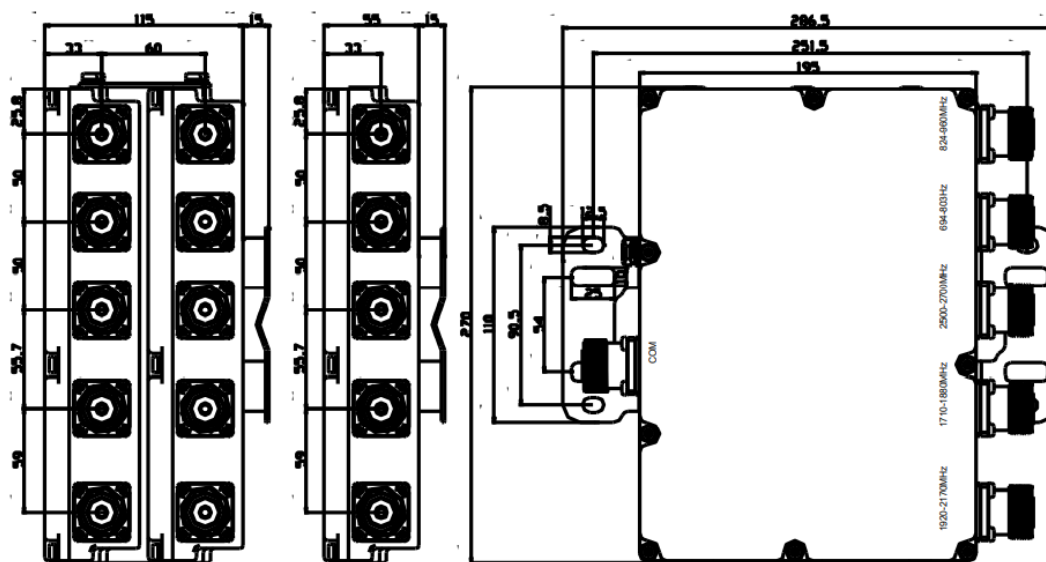
Electrical					
Frequency (MHz)	1920-2170	1710-1880	2500-2700	694-803	824-960
Insertion Loss (dB)	≤0.5				
Isolation (dB)	≥50				
Return Loss/VSWR	≤-20dB/1.22				
PIM, 3rd Order (dBc)	≤ -155 (2 x 43 dBm carrier)				
Average power, maximum (W)	200				
Impedance (Ω)	50				
DC/AISG	By-pass(max.3000mA)				
Lightning protection	10KA; 10/350μs pulse				

Mechanical	
Operating temperature	-20°C to +65°C
Storage temperature	-40°C to +85°C
Relative humidity	5% - 95%
Classification of waterproof	IP67
Dimensions (H x W x D) (mm)	270x195x55mm
Net weight (with installation kit) (kg)	≤4
Connector	Din-Female/4.3-10 Female

## Schematic Diagram



### Outline Drawing:



## Pentaplexer Combiner (698-3800)

Model: PVL201.05010638

### Product Features:

- 50 dB input isolation
- Very low insertion loss
- Excellent intermodulation performance
- Built-in lightning protection
- Wall or mast mounting



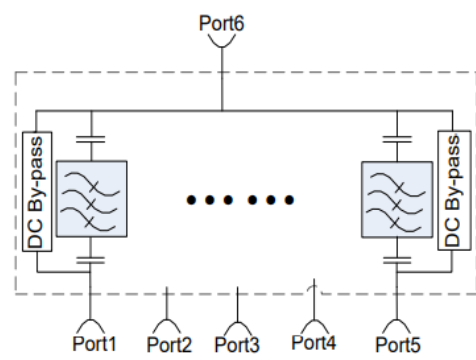
### Technical Specifications:

Electrical					
Frequency (MHz)	698-960	1710-1880	1920-2170	2300-2700	3300-3800
Insertion Loss (dB)	≤0.5				
Isolation (dB)	≥50				
Return Loss/VSWR	≤-20dB/1.25				
PIM, 3rd Order (dBc)	≤ -150 (2 x 43 dBm carrier)				
Average power, maximum (W)	200				
Impedance (Ω)	50				
DC/AISG	By-pass(max.3000mA)				
Lightning protection	10KA; 10/350μs pulse				

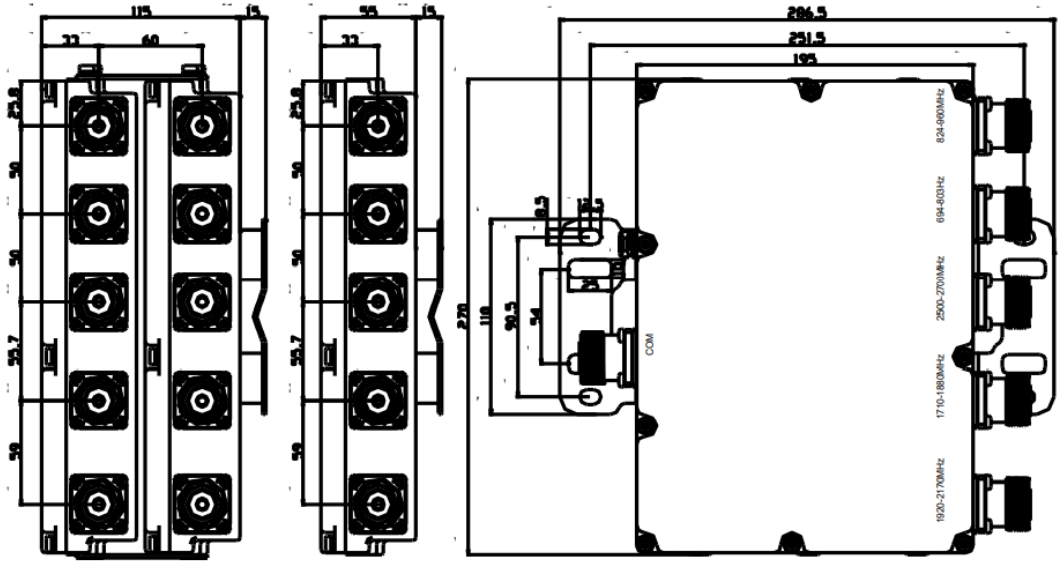
Mechanical	
Operating temperature	-20°C to +65°C
Storage temperature	-40°C to +85°C
Relative humidity	5% - 95%
Classification of waterproof	IP67
Dimensions (H x W x D) (mm)	270x195x55mm
Net weight (with installation kit) (kg)	≤4
Connector	Din-Female/4.3-10 Female



# Schematic Diagram



# Outline Drawing:



## Same Band Combiner (698-2700)

Model: PVL201.02010627

### Product Features:

- 698-2700MHz
- Low VSWR
- Excellent intermodulation performance
- High stability

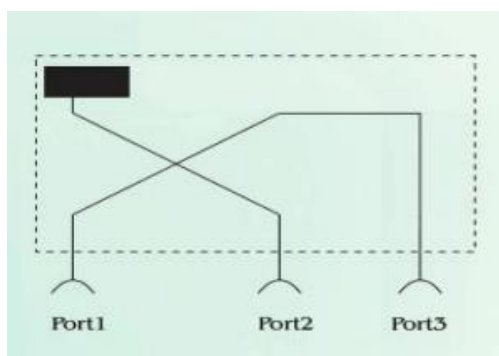


### Technical Specifications:

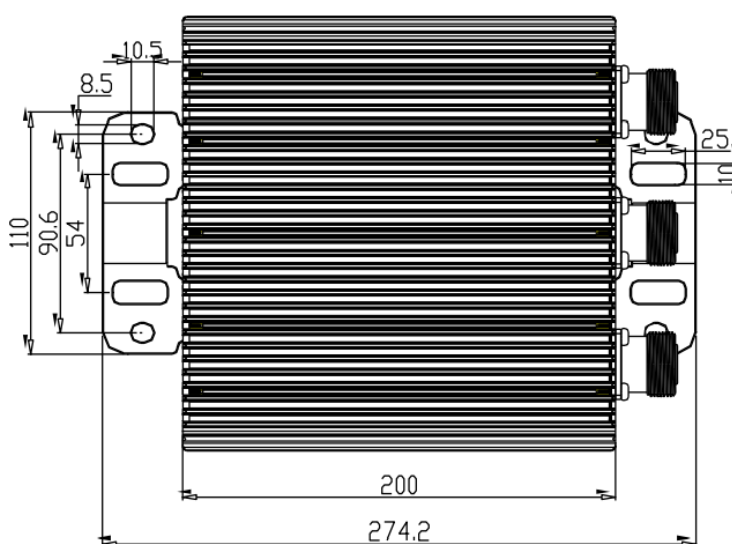
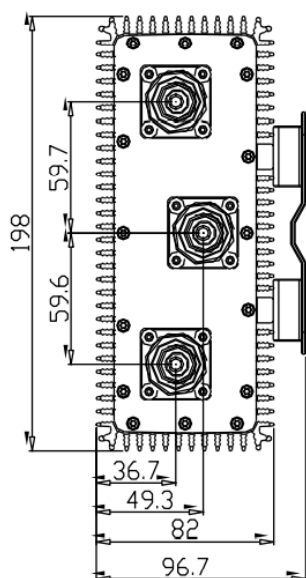
Electrical	
Frequency (MHz)	698-2700
Insertion Loss (dB)	≤3.5
Isolation (dB)	≥25
VSWR	1.25
PIM, 3rd Order (dBc)	≤ -160 (2 x 43 dBm carrier)
Average power, maximum (W)	200
Impedance (Ω)	50

Mechanical	
Operating temperature	-40°C to +65°C
Storage temperature	-40°C to +85°C
Relative humidity	5% - 95%
Classification of waterproof	IP67
Dimensions (H x W x D) (mm)	200x198x82mm
Net weight (with installation kit) (kg)	≤2.8
Connector	Din-Female/4.3-10 Female

## Schematic Diagram



## Outline Drawing:



## Same Band Combiner (890.2-959.8)

Model: PVL201.02010809

### Product Features:

- 30 dB input isolation
- Very low insertion loss
- Excellent intermodulation performance
- Built-in lightning protection
- Wall or mast mounting

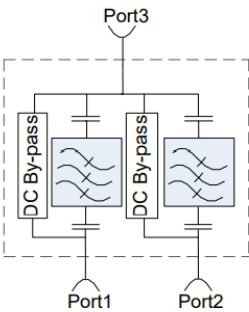


### Technical Specifications:

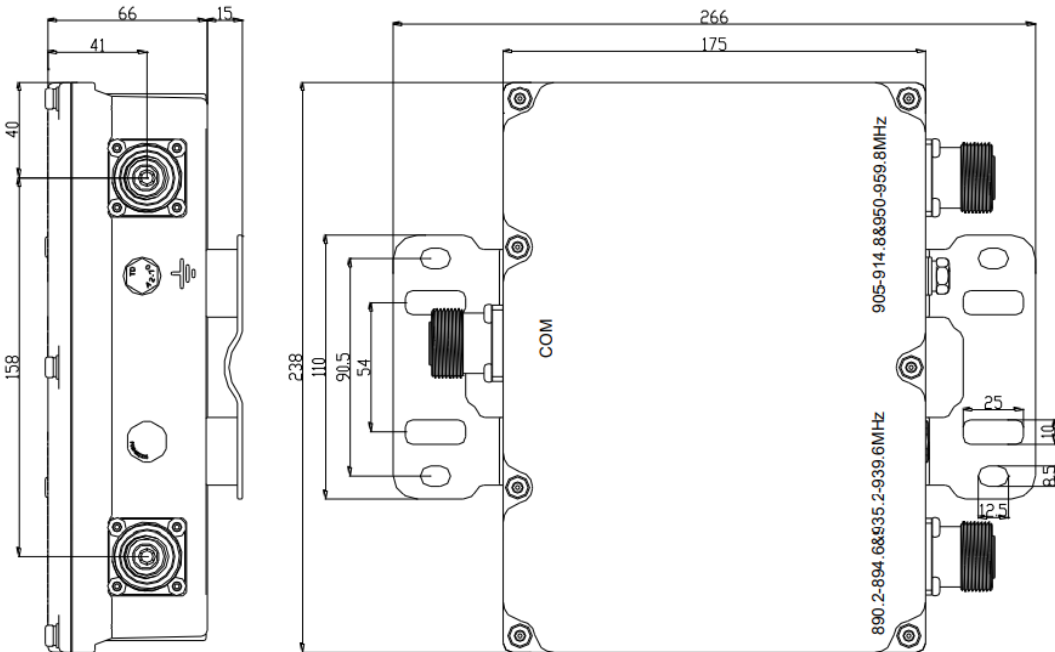
Electrical		
Frequency (MHz)	890.2-894.6/935.2-939.6	905-914.8/950-959.8
Insertion Loss (dB)	≤0.6	
Isolation (dB)	≥30	
Return Loss/VSWR	≤-20dB/1.22	
PIM, 3rd Order (dBc)	≤ -160 (2 x 43 dBm carrier)	
Average power, maximum (W)	200	
Impedance (Ω)	50	
DC/AISG	By-pass(max.3000mA)	
Lightning protection	10KA; 10/350μs pulse	

Mechanical	
Operating temperature	-20°C to +65°C
Storage temperature	-40°C to +85°C
Relative humidity	5% - 95%
Classification of waterproof	IP67
Dimensions (H x W x D) (mm)	238x175x66mm
Net weight (with installation kit) (kg)	≤2.8
Connector	Din-Female/4.3-10 Female

# Schematic Diagram



# Outline Drawing:



## Same Band Combiner (1720-2170)

Model: PVL201.02011721

### Product Features:

- 30 dB input isolation
- Very low insertion loss
- Excellent intermodulation performance
- Built-in lightning protection
- Wall or mast mounting

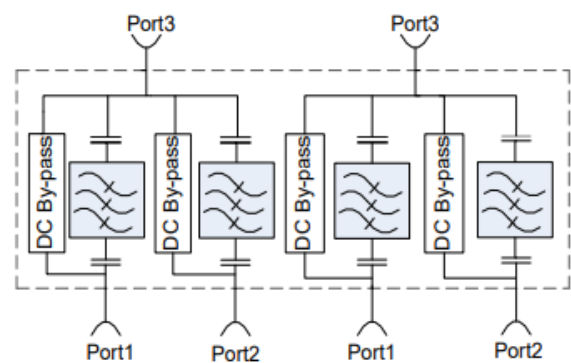


### Technical Specifications:

Electrical		
Frequency (MHz)	1720-1740&2120-2140	1755-1770&2155-2170
Insertion Loss (dB)	≤0.4	
Isolation (dB)	≥30	
Return loss/VSWR	≤-20 dB/1.22	
PIM, 3rd Order (dBc)	≤ -160 (2 x 43 dBm carrier)	
Average power, maximum (W)	200	
Impedance (Ω)	50	
DC/AISG	By-pass (max. 3000mA)	
Lightning protection	10KA; 10/350μs pulse	

Mechanical	
Operating temperature	-40°C to +65°C
Storage temperature	-40°C to +85°C
Relative humidity	5% - 95%
Classification of waterproof	IP67
Dimensions (H x W x D) (mm)	252x198x51mm
Net weight (with installation kit) (kg)	≤4
Connector	Din-Female/4.3-10 Female

# Schematic Diagram



# Outline Drawing:

