



# SMALL CELL ANTENAS SEISEN

## SMALL CELL ANTENNA (1710-5850)

Model: 255.10917581



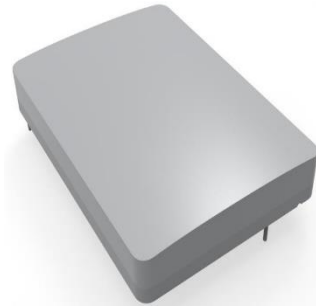
### Technical Specifications:

255.10917581		
Frequency Range	1710-1880/1920-2170/2500-2690&2400-2500&5150-5850 MHz	
Condition1 (Single Column)	Gain	9 dBi
	Cross polarization@ Pol@0Deg	>=15 dB
	Cross polarization@ Pol@+/-25Deg	>=12 dB
Condition2 (Narrow HPBW)	Max Sweep angle (azimuth)	+/-17 °
	Azimuth PBW	40 °
	Gain @ 0deg	12 dBi
Condition3 (Wide HPBW)	azimuth HPBW	90 °
	Ripple in HPBW Range	<=3 dB
Dimension	250*200*20 mm	
Storage Temperature	-55~80°C	
Protection Against Dust	IP 67	

Technical specification is subject to change without prior notice.

## SMALL CELL ANTENNA (1710-2170)

Model: 255.11117211



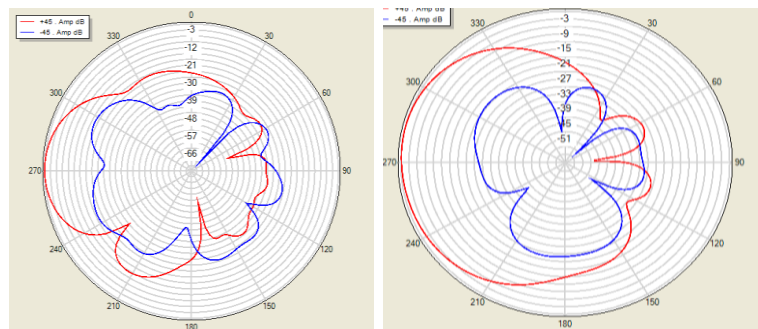
### Technical Specifications:

255.11117211		
Frequency Range		1710~2170 MHz
Polarization		+/- 45°
F/B Ratio		≥28 dB
VSWR		≤1.5
Impedance		50Ω
Power Rating		43 dBm
Downtilt		0±4° (Fixed)
Horizontal Beamwidth		65±10°
Horizontal Beamwidth Tolerance		±5°
Vertical Beamwidth		@1710~1880 MHz: 35±3°
		@1850~1990 MHz: 33±3°
		@1920~2170 MHz: 31±3°
Gain		11±1 dBi
Isolation		≥25 dB
Cross-Polar Discrimination	@0deg	≥20 dB
	@+/-60deg	≥10 dB

Technical specification is subject to change without prior notice.

# SMALL CELL ANTENNA (1710-2690)

Model: 255.11117261



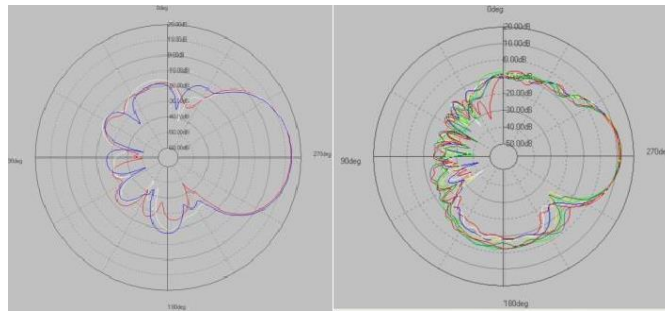
## Technical Specifications:

255.11117261		1710~1880 MHz	2496~2690 MHz
Frequency		1710~1880 MHz	2496~2690 MHz
Polarization		$\pm 45^\circ$	
VSWR		$\leq 1.5$	
Gain		$11 \pm 1$ dBi	
Horizontal Beamwidth		$65 \pm 9^\circ$	
Vertical Beamwidth		$33 \pm 3^\circ$	
Isolation		$\geq 25$ dB	
F/B ratio		$\geq 23$ dB	
Power Rating		@1710~1880 MHz: 40 dBm	
		@2496~2690 MHz: 43 dBm	
Squint 3dB		$\pm 5^\circ$	
Cross-Polar Discrimination	@0deg	$\geq 15$ dB	
	@ +/-60deg	$\geq 8$ dB	

Technical specification is subject to change without prior notice.

# SMALL CELL ANTENNA (2400-5850)

Model: 255.11324581



## Technical Specifications:

255.11324581		
Frequency Range	2400~2500 MHz	5150~5850 MHz
Gain	13±1 dBi	10±1 dBi
Horizontal Beam Width(3dB)	< 36°	
Vertical Beam Width(3dB)	< 36°	
Electrical Downtilt	0°	
VSWR	≤2:1	≤2.4:1
Isolation between Ports	> 20 dB	
Cross Polarization Ratio	N/A	
Front to Back Ratio	N/A	
Polarization	H&V	
Input Maximum CW Power	2 W	
Impedance	50Ω	
Input Connector	4*U.FL	

Technical specification is subject to change without prior notice.

## SMALL CELL ANTENNA (2400-2500)

Model: 255.11424251



### Technical Specifications:

255.11424251	
Frequency Range	2400-2500 MHz
Gain	14 dBi
Horizontal Beam Width(3dB)	30°
Vertical Beam Width(3dB)	30°
Electrical Downtilt	0°
VSWR	≤1.5 : 1
Isolation between Ports	≥28 dB
Front to Back Ratio	≥28 dB
Polarization	X
Input Maximum CW Power	50 W
Impedance	50Ω
Input Connector	N-female

Technical specification is subject to change without prior notice.

## SMALL CELL ANTENNA (1710-2700)

Model: 255.11517271



### Technical Specification

255.11517271		
Frequency Range	1710-2200 MHz	2200-2700 MHz
Polarization	±45°	
VSWR	≤ 1.5	
Gain	14 dBi	15 dBi
Horizontal Half-Power Beam Width	35°	30°
Vertical Half-Power Beam Width	35°	30°
Side Lobe Suppression	≥20 dB	≥20 dB
Cross Polar Ratio	≥20 dB	≥20 dB
Front To Back Ratio	≥25 dB	≥25 dB
Isolation	≥28 dB	≥28 dB
PIM, 3rd Order	≤ -150 dBc	(2 x 43 dBm carrier)
Average Power, Maximum	100 W	
Impedance	50Ω	
Grounding	DC Ground	

Technical specification is subject to change without prior notice.

## SMALL CELL ANTENNA (1710-2170)

Model: 255.21117211



### Technical Specifications:

255.21117211		
Frequency Range		1710~2170 MHz
Polarization		+/- 45°
F/B Ratio		≥25 dB
VSWR		≤1.5
Impedance		50Ω
Power Rating		43 dBm
Downtilt		0±4° (Fixed)
Horizontal Beamwidth		65±10°
Horizontal Beamwidth Tolerance		±5°
Vertical Beamwidth		@1710~1880 MHz: 35±3°
		@1850~1990 MHz: 33±3°
		@1920~2170 MHz: 31±3°
Gain		11±1 dBi
Isolation		≥25 dB
Cross-Polar Discrimination	@0deg	≥15 dB
	@ +/-60deg	≥10 dB

Technical specification is subject to change without prior notice.